



2024 SUZUKI GENUINE MARINE PARTS AND ACCESSORIES



# THE ULTIMATE OUTBOARD MOTOR

# 2024 SUZUKI GENUINE MARINE PARTS AND ACCESSORIES



Please read your Owner's Manual carefully. Never operate the boat while under the influence of alcohol or other drugs. Always wear a personal flotation device when boating. Please operate your outboard safely and responsibly.

Suzuki encourages you to operate your boat safely and with respect for the marine environment.

Specifications, appearances, equipment, colors, materials and other items of "SUZUKI" products shown in this catalogue are subject to change by manufacturers at any time without notice and they may vary depending on local conditions or requirements. Some models are not available in some territories. Each model might be discontinued without notice. Please enquire at your local dealer for details of any such changes. Actual body color might differ from the colors in this brochure.

## Suzuki Motor Corporation

300 TAKATSUKA-CHO, MINAMI-KU, HAMAMATSU-SHI, SHIZUOKA 432-8611 JAPAN  
www.globalsuzuki.com

2024 SUZUKI GENUINE MARINE P & A  
99000-488BM-503



General Export Edition

# INDEX

## SUZUKI ULTIMATE RIGGING SELECTOR(04-05)

04 SUZUKI ULTIMATE RIGGING SELECTOR

## SYNCRO-EYE(06-07)

06 SYNCRO-EYE

## OPERATION SYSTEMS (08-53)

08 SUZUKI PRECISION CONTROL

18 MECHANICAL REMOTE CONTROL

32 KEYLESS START SYSTEM

34 SUZUKI MULTI-FUNCTION GAUGE (SMG4)

42 FishHunter™ Drive

44 SUZUKI DIAGNOSTIC SYSTEM MOBILE PLUS

46 ANALOGUE INSTRUMENT

48 STEERING

50 ELECTRICAL PARTS

52 FUEL SYSTEM

## SUZUKI PROPELLERS (54-57)

54 WATERGRIP

56 PROPELLER LINE-UP

## MAINTAINING YOUR SUZUKI (58-63)

58 ECSTAR

60 CARE & MAINTENANCE ITEM

62 MAINTENANCE KITS

## APPLICATION CHART (64-65)

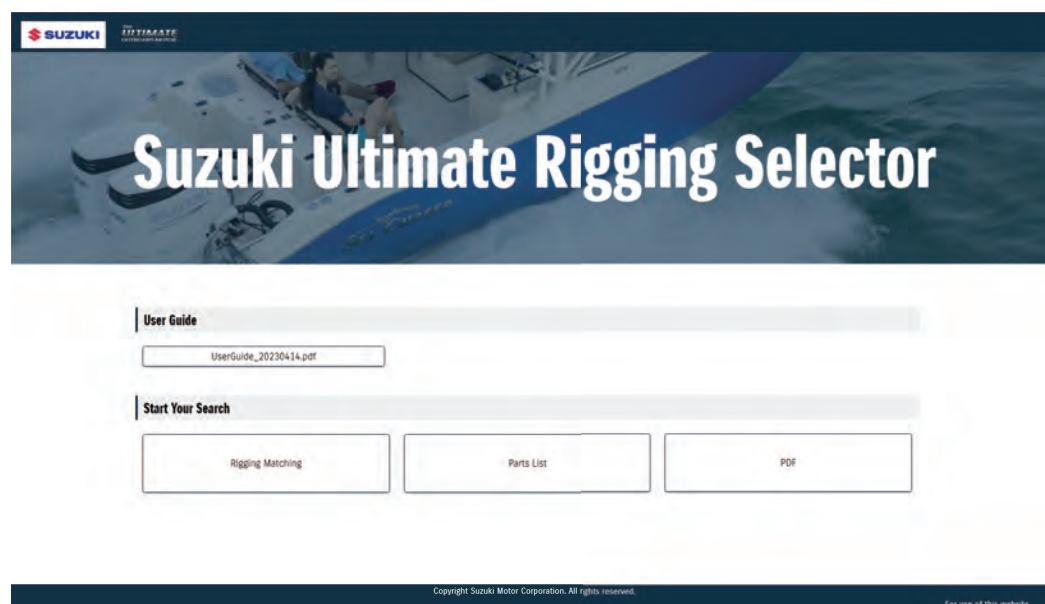


# SUZUKI ULTIMATE RIGGING SELECTOR



The Suzuki Ultimate Rigging Selector is a new website that Suzuki released. The website is designed to assist users in choosing which Part Number they will need for their desired application. It will help shorten users' search time and improve their search accuracy. The Suzuki Ultimate Rigging Selector currently consists of 3 sections: Rigging Matching, Parts List, and PDF.

## Website Top Page



Website address: <https://www.globalsuzuki.com/marine/SuzukiUltimateRiggingSelector/>



## Rigging Matching

Rigging Matching section will assist users in finding the appropriate rigging combinations along with their preference. The system automatically narrows down matching results by only several clicks, and required items will be listed up like below.

Required Items					
	PART NUMBER	NAME	QTY	NOTES	REMARKS
KIT	67000-98L03-000	KIT, SINGLE ENGINE, 1st station	1	Kit details	Click here to check kit components.
A	37100-98L00-000	MAIN SWITCH PANEL	1		
B	37803-98L00-000	EMERGENCY SWITCH PANEL	1		
C	36620-98L00-000	MAIN WIRING HARNESS(6.5m / 21.3ft)	1		
D	36620-98L20-000	MAIN WIRING HARNESS Extension (2m / 6.5ft)	1	Optional	
E	37860-98L00-000	TROLL MODE SWITCH PANEL	1	Optional	
GAUGE	34011-98L44-000	SUZUKI MULTI-FUNCTION GAUGE (SMGA)	1		
GAUGE	36001-88L00-000	CABLE KIT for SMGA	1	Kit details	MSC Single-source: Check kit details in Parts List Section.
Optional 1-1	34190-88L00-000	SENSOR ASSY, PADDLE WHEEL (Speed Over Water)	1	Optional	MSC Single-source: 99000-88317-000
Optional 1-2	39950-88L02-000	GPS RECEIVER MODULE (Speed Over Ground)	1	Optional	

## Parts List

Parts List section contains a list of Part Numbers and item photos. For some kits or sets, you can check the components by clicking on "kit detail".

KITS/SETS					
	PART NUMBER	NAME	QTY	NOTES	IMPORTANT
1	47200-98L00-000	ENGINE MOUNT AC BOX	1		
2	36790-98L00-000	RIGHT CONTROL MODULE (RCM)	1		
3	36795-98L00-000	RCM HOLDER(BACK)	1		
4	36796-98L00-000	RCM HOLDER(FRONT)	1		
5	33925-98L00-000	RCM COUPLER	1		
6	33926-98L00-000	TERMINAL REGISTER	1		
7	36025-98L10-000	BATTERY LEAD (2.20x7.25)	1		
8	36023-98L00-000	RCM #1 WIRING HARNESS (DRAG)	1		
9	06045-13462-000	HARNESS CLAMP	10		

## PDF

PDF section is mainly for items that do not fit the format of above two sections. Items in this section are easier to check in a chart.



# Integrated Control System



"SYNCRE-EYE" is a comprehensive system Suzuki has developed which "connects" various devices so that they may work together in synchronization. This innovative system will also improve the control technology of the boat by "sensing" various situations surrounding the boat and be compatible with future technologies.





# SUZUKI PRECISION CONTROL

Suzuki Precision Control : SPC (Drive By Wire) is a technologically advanced computer-based control system with electronic wiring that eliminates the source of friction and resistance. While you enjoy smooth throttle and shift operation, the system's computer is processing and transmitting commands in real-time to actuators at the engine that deliver precise throttle controls with smoother, decisive shifting.

Suzuki Precision Control : SPC features:

- Control of up to 6 OBM units.
- Automatic Trim available by using SMD or SMG4.

Find out more here:



## Remote Control Box

- Integrated SELECT and THROTTLE ONLY switches.
- 1-lever operation for multiple outboards (Dual Top Mount).



Single Top Mount



Dual Top Mount

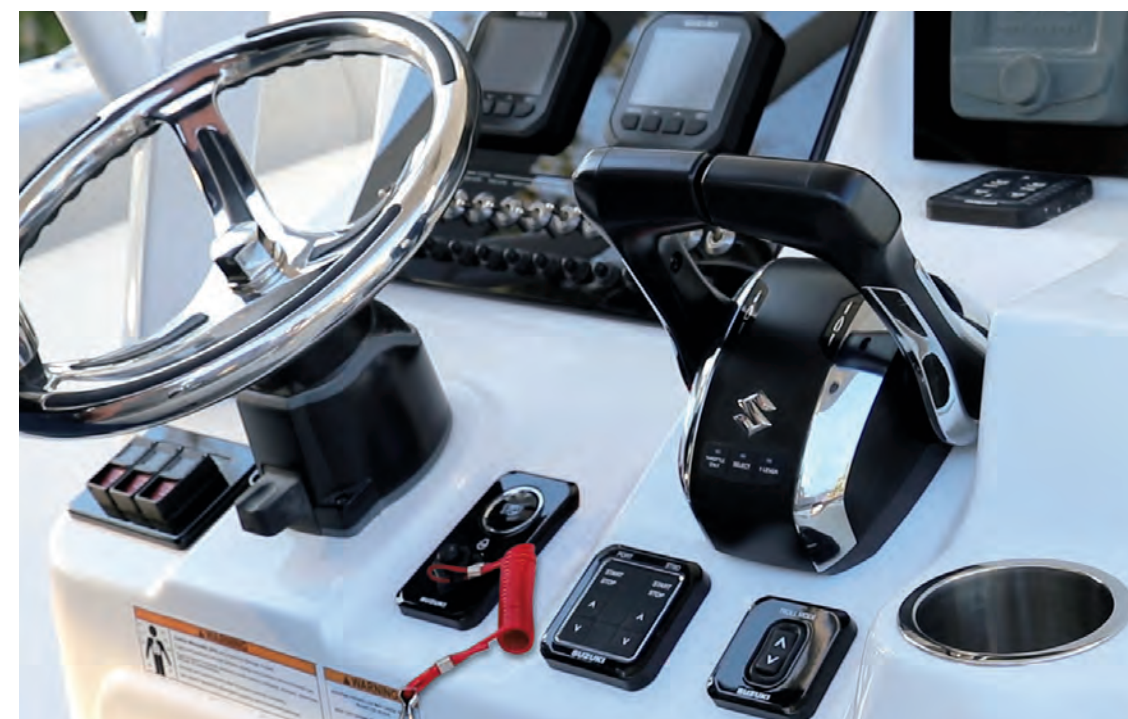


Flush Mount

Integrated emergency stop switch  
(Flush Mount Only)

## Switch Panels

- Mounting bolts concealed for a smooth, luxurious finish.
  - 1 action start/stop for multi-installation boats.  
(Engines start in order from port to starboard)
- ⇒ See page 12 for a reference of switch panel selection.



# COMPONENT PARTS

## 1 R/C BOX TOP MOUNT R/C BOX

FLUSH MOUNT R/C BOX



**67200-98L00-000**  
for Single Engine



**67200-98L10-000**  
for Dual Engine



**67200-98L20-000**  
for Single Engine

## 2 CONTROL PANEL



**37120-98L00-000**  
for Dual Engine



**37120-98L10-000**  
for Triple Engine



**37120-98L20-000**  
for Quadruple Engine  
PORT



**37120-98L30-000**  
for Quadruple Engine,  
Quintuple Engine  
STBD



**37120-98L40-000**  
for Quintuple Engine  
PORT



**37120-98L50-000**  
for Sextuple Engine  
PORT



**37120-98L60-000**  
for Sextuple Engine  
STBD

## 3 BUZZER



**38500-93J90-000**

## 4 BOAT CONTROL MODULE



**36770-98L04-000**

BCM HOLDER (F)  
BCM HOLDER (R)



**36775-98L00-000**  
(F)  
**36776-98L00-000**  
(R)

BCM CUSHION



**33925-98L00-000**

## 5 TERMINAL RESISTOR



**33926-98L00-000**

## 6 BATTERY LEAD WIRE



**36625-98J10-000**  
2.2m / 7.2ft

**36625-98J20-000**  
6.1m / 20ft

## 7 BCM #1 WIRING HARNESS



**36623-98L00-000**  
for Single Engine

**36623-98L30-000**  
for Dual or Triple  
Engine

**36623-98L40-000**  
for  
Quadruple, Quintuple,  
and Sextuple Engine

## 8 HARNESS, EMERGENCY SWITCH EXTENSION



**36627-98L10-000**  
1.5m / 4.9ft

## 9 SIGNAL CONVERTER UNIT



**37140-98L00-000**

## 10 DUAL STATION WIRING HARNESS



**36622-98L00-000**

## 11 BCM #2 WIRING HARNESS



**36624-98L00-000**  
for Single Engine

**36624-98L10-000**  
for Dual or Triple  
Engine

**36624-98L20-000**  
for Quadruple,  
Quintuple, and  
Sextuple engines

## 12 ENGINE WIRING HARNESS



**36621-98L00-000**

## A MAIN SWITCH PANEL (REGULAR KEY)



**37100-98L10-000**  
Vertical type with  
Emergency stop  
switch



**37100-98L20-000**  
Horizontal type with  
Emergency stop  
switch



**37100-98L00-000**  
Ignition only, use with  
emergency switch

# COMPONENT PARTS

## A MAIN SWITCH PANEL (KEYLESS START SYSTEM)



**37290-98L10-000**  
Vertical type with Emergency stop switch



**37290-98L20-000**  
Horizontal type with Emergency stop switch



**37290-98L00-000**  
Ignition only, use with emergency switch



## B EMERGENCY SWITCH PANEL

**37803-98L00-000**

## C MAIN WIRING HARNESS



**36620-98L00-000**  
6.5m / 21.3ft for control system

**36620-98L10-000**  
9.5m / 31.1ft for control system

## D MAIN WIRING HARNESS EXTENSION

**36620-98L20-000**  
2.0m / 6.5ft for control system

## E TROLL MODE SWITCH PANEL



**37860-98L00-000**

## F R/C BOX HARNESS EXTENSION



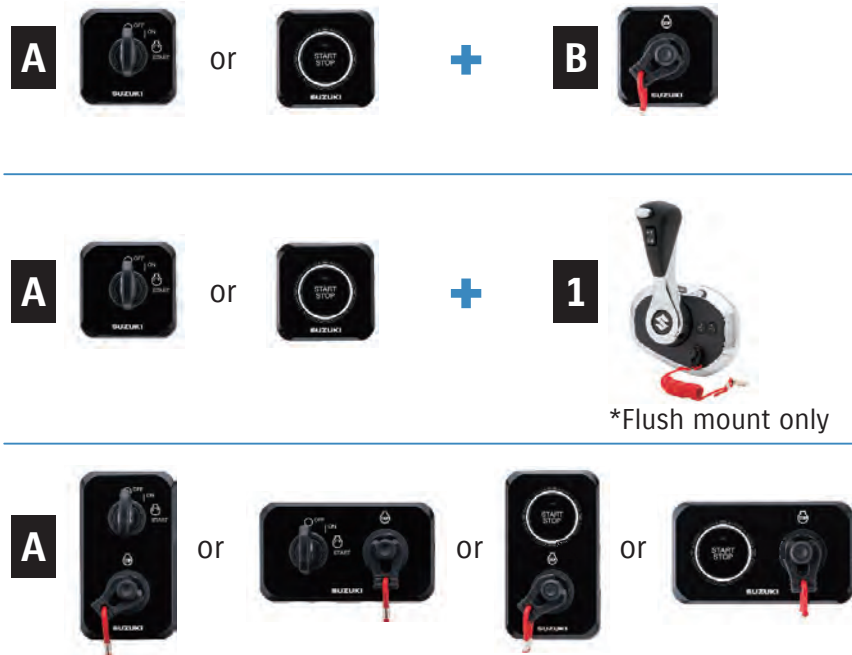
**36627-98L00-000**  
1.0m / 3.2ft

## G HARNESS COMP, CAN EXT



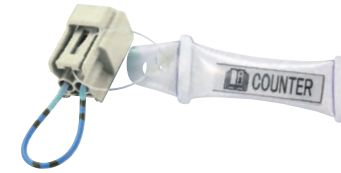
**36627-98L20-000**  
2.0m / 6.5ft for triple engine, and quadruple engine

### Switch Panel Selection Reference



# EXTRA OPTION

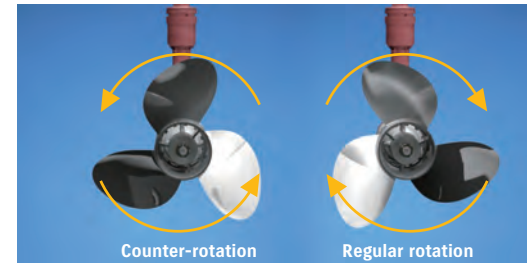
## COUNTER SELECT CONNECTOR



### 36612-98J20-000

Applicable Model DF150AP/175AP/200AP, DF250AP/300AP

Converts to counter rotation specification.



## Suzuki Selective Rotation

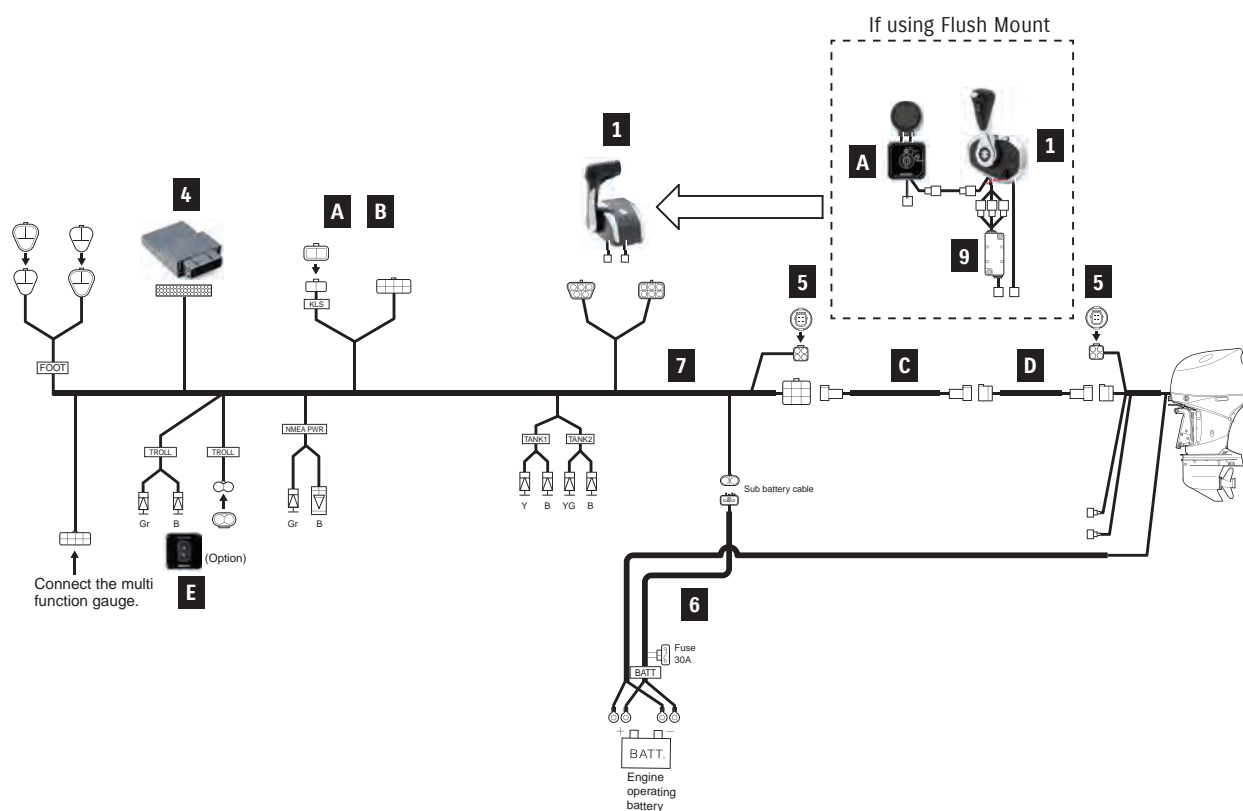
In multi-outboard installations on large boats, a counter-rotation outboard is usually paired with a regular rotation model to help keep the boat travelling on an even keel and in a straight line. Suzuki Selective Rotation eliminates the need to purchase a dedicated counter-rotation outboard by using a special switch that turns a regular rotation outboard into a counter-rotation model.

**SUZUKI SELECTIVE ROTATION**



# REMOTE-CONTROL KIT

## SINGLE ENGINE

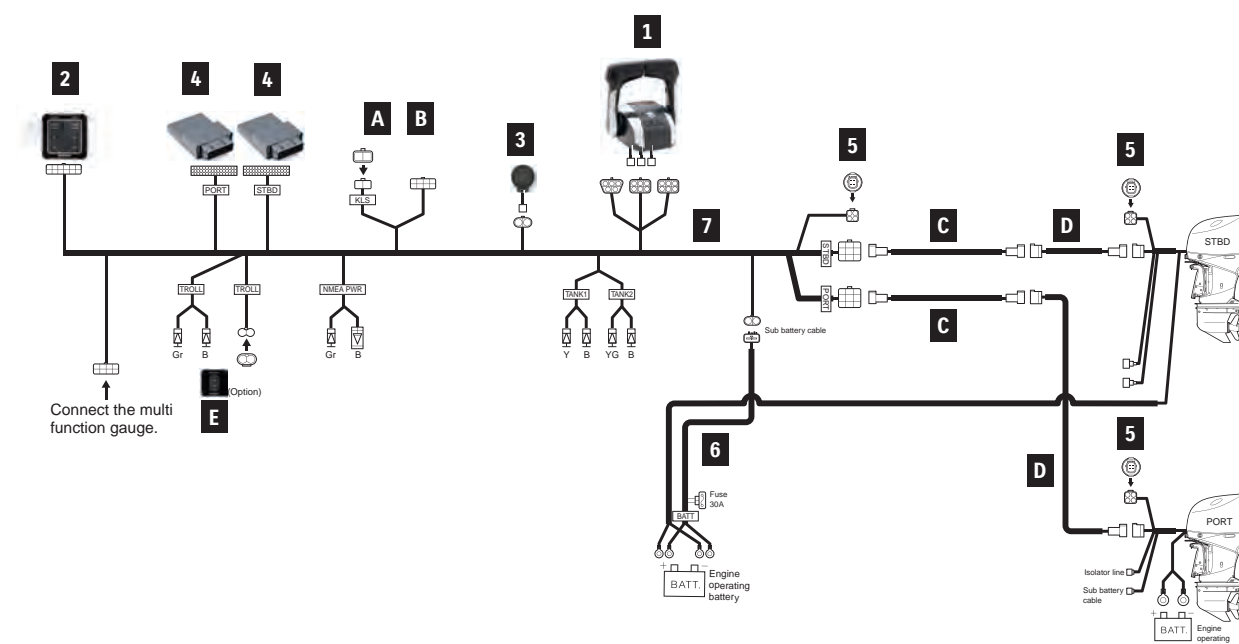


Items A ~ F are not included in the Kits. Please purchase them separately.

For SINGLE ENGINE		KIT				
PART NUMBER	PART NAME	LENGTH	TOP-MOUNT		FLUSH-MOUNT	
			1st STATION KIT 67000-98L04-000	2nd STATION KIT 67000-98LA4-000	1st STATION KIT 67000-98L14-000	2nd STATION KIT 67000-98LB4-000
1	67200-98L00-000 67200-98L20-000	TOP MOUNT R/C BOX FLUSH MOUNT R/C BOX	1 -	1 -	- 1	- 1
3	38500-93J90-000 09407-08401-000	WARNING BUZZER WARNING BUZZER CLAMP	- -	1 1	- -	1 1
4	36770-98L04-000 36775-98L00-000 36776-98L00-000 33925-98L00-000	BOAT CONTROL MODULE BCM HOLDER (F) BCM HOLDER (R) BCM CUSHION	1 1 1 1	1 1 1 1	1 1 1 1	1 1 1 1
5	33926-98L00-000	TERMINAL RESISTOR	2	-	2	-
6	36625-98J10-000	BATTERY-LEAD	1	-	1	-
7	36623-98L00-000	BCM #1 WIRING HARNESS	1	-	1	-
8	36627-98L10-000	HARNESS ASSY,EM SWITCH EXT	-	-	1	1
9	37140-98L00-000	UNIT COMP,SIGNAL CONVERTER	-	-	1	1
10	36622-98L00-000	DUAL-STATION WIRING HARNESS	-	1	-	1
11	36624-98L00-000	BCM #2 WIRING HARNESS	-	1	-	1
-	09403-13402-000	HARNESS CLAMP	10	10	10	10
A	37100-98L00-000 37100-98L10-000 37100-98L20-000 37290-98L00-000 37290-98L10-000 37290-98L20-000	MAIN SWITCH PANEL MAIN SWITCH PANEL VERTICAL MAIN SWITCH PANEL HORIZONTAL MAIN SWITCH PANEL (Keyless) MAIN SWITCH PANEL VERTICAL (Keyless) MAIN SWITCH PANEL HORIZONTAL (Keyless)	Select type	Select type	37100-98L00 or 37290-98L00	37290-98L00
B	37803-98L00-000	EMERGENCY SWITCH PANEL	*1	*1		
C	36620-98L00-000 36620-98L10-000	MAIN WIRING HARNESS	6.5m/21.3ft 9.5m/31.1ft	1 per station		
D	36620-98L20-000	MAIN WIRING HARNESS EXTENSION	2.0m/6.5ft	Select if necessary		
E	37860-98L00-000	TROLL MODE SWITCH PANEL (optional)		Optional		
F	36627-98L00-000	HARNESS COMP,R/CON EXT	1.0m/3.2ft		1	1

\*Required when using 37100-98L00 or 37290-98L00 with TOP MOUNT.

## DUAL ENGINE



Items A ~ F are not included in the Kits. Please purchase them separately.

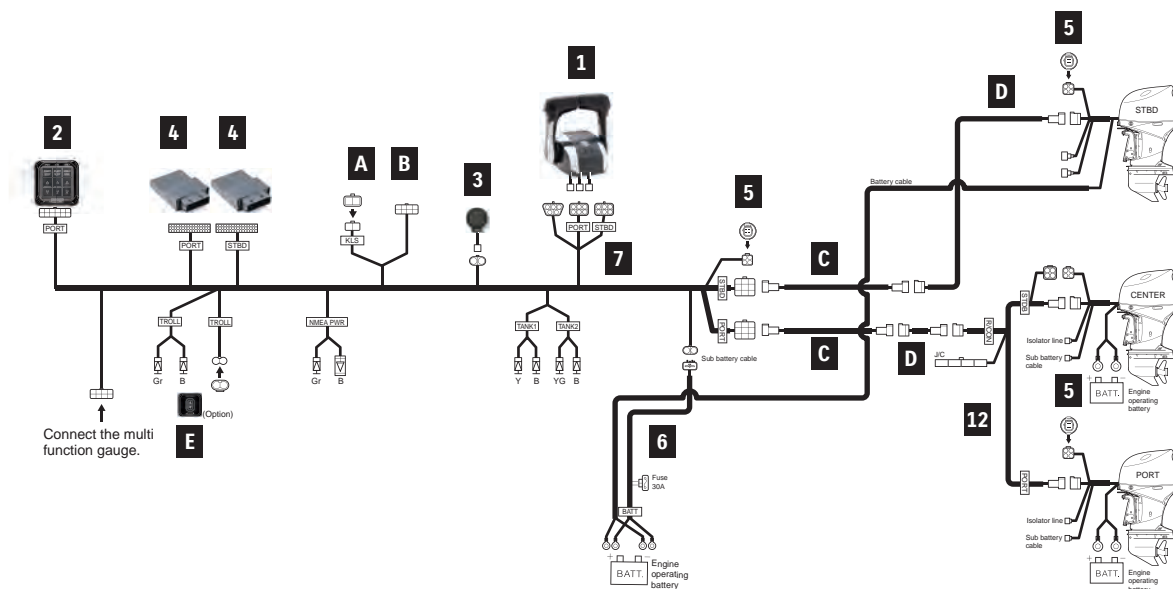
For DUAL ENGINE		KIT		
PART NUMBER	PART NAME	LENGTH	1st STATION KIT	2nd STATION KIT
			67000-98L24-000	67000-98LC4-000
1	67200-98L10-000	TOP MOUNT R/C BOX	1	1
2	37120-98L00-000	CONTROL PANEL	1	1
3	38500-93J90-000 09407-08401-000	WARNING BUZZER WARNING BUZZER CLAMP	1 1	2 2
4	36770-98L04-000 36775-98L00-000 36776-98L00-000 33925-98L00-000	BOAT CONTROL MODULE BCM HOLDER (F) BCM HOLDER (R) BCM CUSHION	2 2 2 2	2 2 2 2
5	33926-98L00-000	TERMINAL RESISTOR	3	-
6	36625-98J10-000	BATTERY-LEAD	1	-
7	36623-98L30-000	BCM #1 WIRING HARNESS	1	-
10	36622-98L00-000	DUAL-STATION WIRING HARNESS	-	1
11	36624-98L10-000	BCM #2 WIRING HARNESS	-	1
-	09403-13402-000	HARNESS CLAMP	15	10
-	36612-98J20-000	CONNECTOR, COUNTER SELECT	1	-
A	37100-98L00-000 37100-98L10-000 37100-98L20-000 37290-98L00-000 37290-98L10-000 37290-98L20-000	MAIN SWITCH PANEL MAIN SWITCH PANEL VERTICAL MAIN SWITCH PANEL HORIZONTAL MAIN SWITCH PANEL (Keyless) MAIN SWITCH PANEL VERTICAL (Keyless) MAIN SWITCH PANEL HORIZONTAL (Keyless)	Select type	Select type
B	37803-98L00-000	EMERGENCY SWITCH PANEL	*1	*1
C	36620-98L00-000 36620-98L10-000	MAIN WIRING HARNESS	6.5m/21.3ft 9.5m/31.1ft	2 per station
D	36620-98L20-000	MAIN WIRING HARNESS EXTENSION	2.0m/6.5ft	Select if necessary
E	37860-98L00-000	TROLL MODE SWITCH PANEL (optional)		Optional
F	36627-98L00-000	HARNESS COMP,R/CON EXT	1.0m/3.2ft	Select if necessary

\*Required when using 37100-98L00 or 37290-98L00 with TOP MOUNT.

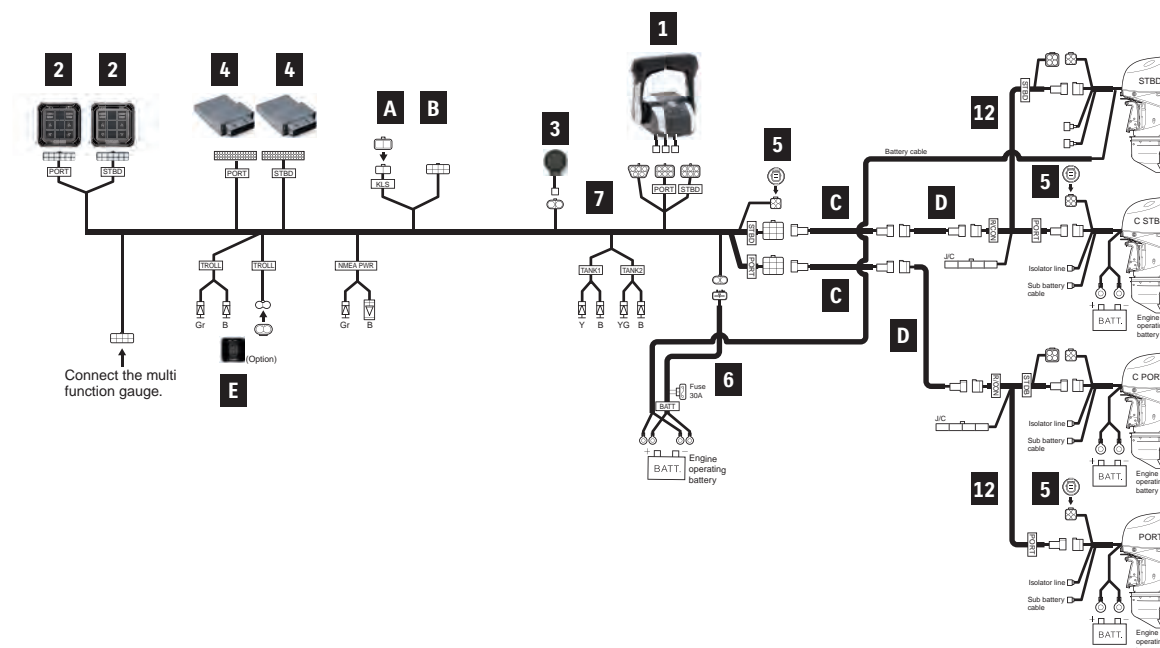


# REMOTE-CONTROL KIT

## TRIPLE ENGINE



## QUADRUPLE ENGINE



Items A ~ G are not included in the Kits. Please purchase them separately.

For TRIPLE ENGINE				KIT	
PART NUMBER	PART NAME	LENGTH	1st STATION KIT 67000-98L34-000	2nd STATION KIT 67000-98LD4-000	
1	67200-98L10-000	TOP MOUNT R/C BOX	1	1	
2	37120-98L10-000	CONTROL PANEL	1	1	
3	38500-93J90-000	WARNING BUZZER	1	2	
	09407-08401-000	WARNING BUZZER CLAMP	1	2	
4	36770-98L04-000	BOAT CONTROL MODULE	2	2	
	36775-98L00-000	BCM HOLDER (F)	2	2	
	36776-98L00-000	BCM HOLDER (R)	2	2	
	33925-98L00-000	BCM CUSHION	2	2	
5	33926-98L00-000	TERMINAL RESISTOR	3	-	
6	36625-98J10-000	BATTERY-LEAD	1	-	
7	36623-98L30-000	BCM #1 WIRING HARNESS	1	-	
10	36622-98L00-000	DUAL-STATION WIRING HARNESS	-	1	
11	36624-98L10-000	BCM #2 WIRING HARNESS	-	1	
12	36621-98L00-000	ENGINE WIRING HARNESS	1	-	
-	09403-13402-000	HARNESS CLAMP	18	10	
-	36612-98J20-000	CONNECTOR, COUNTER SELECT	1	-	
A	37100-98L00-000 37100-98L10-000 37100-98L20-000 37290-98L00-000 37290-98L10-000 37290-98L20-000	MAIN SWITCH PANEL MAIN SWITCH PANEL VERTICAL MAIN SWITCH PANEL HORIZONTAL MAIN SWITCH PANEL (Keyless) MAIN SWITCH PANEL VERTICAL (Keyless) MAIN SWITCH PANEL HORIZONTAL (Keyless)	Select type	Select type	
B	37803-98L00-000	EMERGENCY SWITCH PANEL	*1	*1	
C	36620-98L00-000 36620-98L10-000	MAIN WIRING HARNESS	6.5m/21.3ft 9.5m/31.1ft	2 per station	
D	36620-98L20-000	MAIN WIRING HARNESS EXTENSION	2.0m/6.5ft	Select if necessary	
E	37860-98L00-000	TROLL MODE SWITCH PANEL		Optional	
F	36627-98L00-000	HARNESS COMP, R/CON EXT	1.0m/3.2ft	Select if necessary	
G	36627-98L20-000	HARNESS COMP, CAN EXT	2.0m/6.5ft	Select if necessary	

\*Required when using 37100-98L00 or 37290-98L00 with TOP MOUNT.

Items A ~ G are not included in the Kits. Please purchase them separately.

For QUADRUPLE ENGINE				KIT	
PART NUMBER	PART NAME	LENGTH	1st STATION KIT 67000-98L44-000	2nd STATION KIT 67000-98LE4-000	
1	67200-98L10-000	TOP MOUNT R/C BOX	1	1	
2	37120-98L20-000	CONTROL PANEL PORT	1	1	
	37120-98L30-000	CONTROL PANEL STBD	1	1	
3	38500-93J90-000	WARNING BUZZER	1	2	
	09407-08401-000	WARNING BUZZER CLAMP	1	2	
4	36770-98L04-000	BOAT CONTROL MODULE	2	2	
	36775-98L00-000	BCM HOLDER (F)	2	2	
	36776-98L00-000	BCM HOLDER (R)	2	2	
	33925-98L00-000	BCM CUSHION	2	2	
5	33926-98L00-000	TERMINAL RESISTOR	3	-	
6	36625-98J10-000	BATTERY-LEAD	1	-	
7	36623-98L40-000	BCM #1 WIRING HARNESS	1	-	
10	36622-98L00-000	DUAL-STATION WIRING HARNESS	-	1	
11	36624-98L20-000	BCM #2 WIRING HARNESS	-	1	
12	36621-98L00-000	ENGINE WIRING HARNESS	2	-	
-	09403-13402-000	HARNESS CLAMP	20	15	
-	36612-98J20-000	CONNECTOR, COUNTER SELECT	2	-	
A	37100-98L00-000 37100-98L10-000 37100-98L20-000 37290-98L00-000 37290-98L10-000 37290-98L20-000	MAIN SWITCH PANEL MAIN SWITCH PANEL VERTICAL MAIN SWITCH PANEL HORIZONTAL MAIN SWITCH PANEL (Keyless) MAIN SWITCH PANEL VERTICAL (Keyless) MAIN SWITCH PANEL HORIZONTAL (Keyless)	Select type	Select type	
B	37803-98L00-000	EMERGENCY SWITCH PANEL	*1	*1	
C	36620-98L00-000 36620-98L10-000	MAIN WIRING HARNESS	6.5m/21.3ft 9.5m/31.1ft	2 per station	
D	36620-98L20-000	MAIN WIRING HARNESS EXTENSION	2.0m/6.5ft	Select if necessary	
E	37860-98L00-000	TROLL MODE SWITCH PANEL		Optional	
F	36627-98L00-000	HARNESS COMP,R/CON EXT	1.0m/3.2ft	Select if necessary	
G	36627-98L20-000	HARNESS COMP,CAN EXT	2.0m/6.5ft	Select if necessary	

\*Required when using 37100-98L00 or 37290-98L00 with TOP MOUNT.

# MECHANICAL REMOTE CONTROL



For mechanical control models from year 2023, we introduced a new Main Wiring Harness. This harness enables CAN connection, which allows mechanical models to use functions that were previously exclusive to SPC models.

By using with the SMG4, it also enables the Automatic trim and use of the new Keyless Start System\*.

## Functions available using the CAN Harness

	DF40A-60A	DF70A-100B	DF100C-140B	DF150A-200A	DF200-250
CAN Connection	✓	✓	✓	✓	X
Automatic Trim	X	X	✓	✓	X
New Keyless Start System	X	✓	✓	✓	X

\*If using the new Keyless Start System, please ensure to use the new switch panels.

The Keyless Start System is only available in limited regions. If you are not sure about your market, please check with your country coordinator.

## REMOTE-CONTROL

	Reference			
MAIN WIRING HARNESS (CAN Connection)	36620-93JA0/B0/C0 			
REMOTE CONTROL BOX	67200-88L02 	67200-88L12 	67200-93J34 	67200-93J70 
MAIN SWITCH PANEL (Regular Key)	37100-98L** 			
MAIN SWITCH PANEL (Keyless)	37290-98L**  Remark: SMG4 is necessary for using Keyless system.			
GAUGE	SMG4 (page 34) 		Analogue Gauge (page 46) 	

# COMPONENT OF MECHANICAL REMOTE CONTROL

## 1 R/C BOX TOP MOUNT R/C BOX

### TOP MOUNT R/C BOX DUAL

### FLUSH MOUNT R/C BOX



**67200-88L02-000**  
for Single Engine  
Applicable Model DF8A-250



**67200-88L12-000**  
for Dual Engine  
Applicable Model DF70A-250



**67200-93J34-000**  
for Single Engine  
Applicable Model DF8A-250

## SIDE MOUNT REMOTE CONTROL BOX



**67200-91J32-000**  
for Single Engine. Without IGN SW  
Applicable Model DF4A-6A

**67200-94J40-000**  
for Single Engine. With warning  
buzzer without PTT switch  
Applicable Model DF8A-30A

**67200-93J70-000**  
for Single Engine. With PTT switch  
Applicable Model DF9.9B-250

**67200-97E64-000**  
for Single Engine  
Applicable Model DT40W

**67200-96B3-000**  
for Single Engine  
Applicable Model DT25K/30

## 2 MAIN SWITCH PANEL (REGULAR KEY)



**37100-98L10-000**  
Vertical type With  
Emergency stop switch  
Applicable Model DF9.9B-250



**37100-98L20-000**  
Horizontal type With  
Emergency stop switch  
Applicable Model DF9.9B-250



**37100-98L30-000**  
Dual Ignition With  
Emergency stop switch  
Applicable Model DF9.9B-250



**37100-98L00-000**  
Ignition switch only  
Applicable Model DF9.9B-250

## 2 MAIN SWITCH PANEL (KEYLESS START SYSTEM with CAN Connection)



**37290-98L10-000**  
Vertical type with  
Emergency stop  
switch



**37290-98L20-000**  
Horizontal type with  
Emergency stop  
switch



**37290-98L00-000**  
Ignition switch only



**37803-98L00-000**

## 3 EMERGENCY SWITCH PANEL

## 4 MAIN WIRING HARNESS (CAN Connection)



**36620-93JA0-000**  
6.5m/21.3ft for Control system  
Applicable Model DF40A-200A

**36620-93JB0-000**  
5.0m/16.4ft for Control system  
Applicable Model DF40A-200A

**36620-93JC0-000**  
8.0m/26.2ft for Control system  
Applicable Model DF40A-200A

## MAIN WIRING HARNESS EXTENSION



**36620-93JD0-000**  
Extension, 2.0m/6.5ft  
Applicable Model DF40A-200A

**36620-93JE0-000**  
Extension, 3.0m/9.8ft  
Applicable Model DF40A-200A

## 4 MAIN WIRING HARNESS (Non-CAN Connection)



**36620-93J70-000**  
6.5m/21.3ft for Control system  
Applicable Model DF40A-250

**36620-93J80-000**  
5.0m/16.4ft for Control system  
Applicable Model DF40A-250

**36620-93J90-000**  
8.0m/26.2ft for Control system  
Applicable Model DF40A-250

**36620-89L10-000**  
6.5m/21.3ft for Control system  
Applicable Model DF8A/DF9.9B/  
15A/20A

**36620-94L20-000**  
6.5m/21.3ft for Control system  
Applicable Model DF25A/30A

**36620-93J12-000**  
2.0m/6.5ft for Control system  
Applicable Model DF8A/  
DF9.9B-250

**36620-93J42-000**  
3.0m/9.8ft for Control system  
Applicable Model DF8A/  
DF9.9B-250

## MAIN WIRING HARNESS EXTENSION

**5** REMOTE-CONTROL CABLE (ORT THROTTLE AND SHIFT CABLES)



**67320-93J00-000**  
2.44 m / 8.0 ft  
Applicable Model DF4A-250,  
DT30/40W

**67320-93J10-000**  
3.05 m / 10.0 ft  
Applicable Model DF4A-250,  
DT30/40W

**67320-93J20-000**  
3.66 m / 12.0 ft  
Applicable Model DF4A-250,  
DT30/40W

**67320-93J30-000**  
4.27 m / 14.0 ft  
Applicable Model DF4A-250,  
DT30/40W

**67320-93J40-000**  
4.88 m / 16.0 ft  
Applicable Model DF4A-250,  
DT30/40W

**67320-93J50-000**  
5.49 m / 18.0 ft  
Applicable Model DF4A-250,  
DT30/40W

**67320-93J60-000**  
6.10 m / 20.0 ft  
Applicable Model DF4A-250,  
DT30/40W

**67320-93J70-000**  
6.71 m / 22.0 ft  
Applicable Model DF4A-250,  
DT30/40W

**67320-93J80-000**  
7.32 m / 24.0 ft  
Applicable Model DF4A-250,  
DT30/40W

**6** PTT SWITCH PANEL



**37805-88L00-000**  
Applicable Model DF40A-250

**7** KEYLESS CONTROL UNIT



**37171-98L02-000**  
433MHz for CAN connection

**37171-98L11-000**  
315MHz for CAN connection

**8** HARNESS ASSY, KEYLESS CONTROL



**36623-98LA0-000**  
for CAN connection

**9** BUZZER ASSY



**38500-93J90-000**

**10** RELAY ASSY, KLS



**38860-96L01-000**

**11** KEY FOB



**37172-96L03-000**  
433MHz

**37172-96L11-000**  
315MHz

**12** HARNESS ASSY, KLS DUAL ENGINE

No photo available

**36621-98L31-000**

**13** WIRE COMP, CAN

No photo available

**36661-96L40-000**

SPACER KIT



**67500-88L00-000**  
for Single Top-mount type  
Applicable Model DF8A-250

**67500-88L10-000**  
for Dual Top-mount type  
Applicable Model DF70A-250

REMOTE CONTROL ATTACHMENT KIT

Converts ME model to REMOTE-CONTROL model.



**67101-97L00-000**  
Applicable Model DF4A-6A

**67130-89L22-000**  
Applicable Model DF9.9B/15A/20A

CLAMP BRACKET SET

No photo available

**67130-94L30-000**  
Applicable Model DF25A/30A  
(Year 2023~)

**67130-94L20-000**  
Applicable Model DF25ATH/30ATH  
(Year 2023~)

**67130-99J02-000**  
Requires CLAMP BRACKET SET  
(41100-99JL0-YAY)  
Applicable Model DF8A/9.9A

**67130-91L01-YAY**  
Applicable Model DT25K/30

**67130-94812-000**  
Applicable Model DT40W

**41100-99JL0-YAY**  
Required to install  
67130-99J02  
Applicable Model DF8A/9.9A

TWIN REMOTE-CONTROL  
ATTACHMENT KIT



**67140-95601-000**

Applicable Model DF9.9B-30A/  
100C-250  
DT40W

BATTERY LEAD



**36625-93J10-000**

6.7 m / 21.9ft  
Applicable Model DF100C-200A/  
200-250

**36625-93J01-000**

3.9 m / 12.7ft  
Applicable Model DF100C-200A/  
200-250

KEYLESS PARTS HOLDER



**37173-96L10-000**

HOLDER



**32980-38F00-000**

CUSHION



**32851-93J00-000**



## EXTRA OPTIONS

### RIGGING TUBE



**990C0-20010-000**

Applicable Model DF70A-350A  
\*Connect to the hose adapter  
equipped on the engine

### TROLL MODE SWITCH PANEL



## SUZUKI TROLL MODE SYSTEM

**Troll Mode Switch:**

An option for Remote Control models from DF40A and over, this system allows the user to adjust engine speed in 50rpm increments, giving highly precise control at low revs. With its own tachometer and control switch, it works alongside our multi-function gauges and analogue gauges.

(Tiller Handle Models from DF40A and over have Suzuki Troll Mode System as standard equipment)

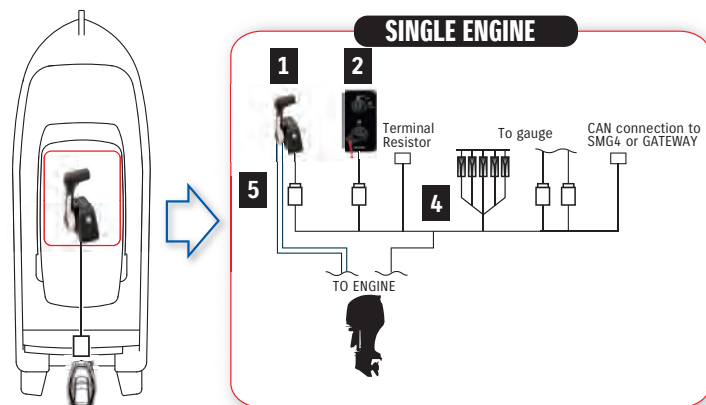
\*Not Applicable for DF250/225/200, DF250W, DF150W, DF90AWQH

**37860-98L00-000**

Applicable Model DF40A-200A/  
150AP-300AP/  
300B/325A/350A

Activates SUZUKI Troll Mode  
System and controls RPM  
from idling engine speed up to  
1200rpm at every 50rpm.

## SINGLE ENGINE with CAN Connection



For SINGLE ENGINE (SINGLE STATION, REGULAR KEY)				Required Quantity		
PART NUMBER	PART NAME	LENGTH	TOP-MOUNT	FLUSH-MOUNT	SIDE-MOUNT	
1	67200-88L02-000 67200-93J34-000 67200-93J70-000	TOP MOUNT R/C BOX FLUSH MOUNT R/C BOX SIDE MOUNT R/C BOX	1 - -	- 1 -	- - 1	-
2	37100-98L10-000 37100-98L20-000 37100-98L00-000	PANEL ASSY, MAIN SWITCH VERTICAL PANEL ASSY, MAIN SWITCH HORIZONTAL MAIN SWITCH PANEL	1	1	-	-
3	37803-98L00-000	EMERGENCY SWITCH PANEL	*1	*1	-	-
4	36620-93JA0-000 36620-93JB0-000 36620-93JC0-000 36620-93JD0-000 36620-93JE0-000	MAIN WIRING HARNESS MAIN WIRING HARNESS MAIN WIRING HARNESS WIRE ASSY, REMOTE CONTROL EXT WIRE ASSY, REMOTE CONTROL EXT	6.5m / 21.3ft 5.0m / 16.4ft 8.0m / 26.2ft 2.0m / 6.5ft 3.0m / 9.8ft	1	1	1
5	67320-93J00-000 67320-93J10-000 67320-93J20-000 67320-93J30-000 67320-93J40-000 67320-93J50-000 67320-93J60-000 67320-93J70-000 67320-93J80-000	R/C CABLE	2.4m / 8.0ft 3.0m / 9.8ft 3.6m / 12.0ft 4.2m / 14.0ft 4.8m / 16.0ft 5.4m / 18.0ft 6.1m / 20.0ft 6.7m / 22.0ft 7.3m / 24.0ft	Optional	Optional	Optional
					Select two	

\*Only if using 37100-98L00-000

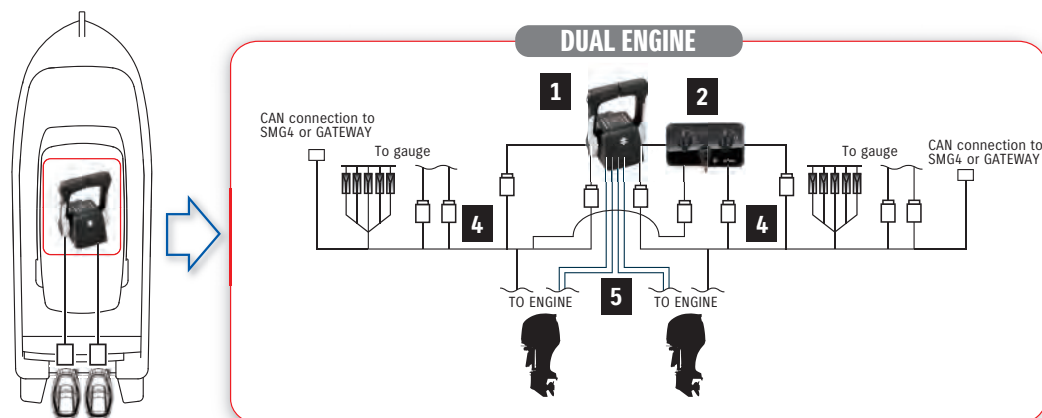
## For KEYLESS START SYSTEM

For SINGLE ENGINE (SINGLE STATION with KEYLESS SYSTEM)			Required Quantity	
PART NUMBER	PART NAME	LENGTH	TOP-MOUNT	FLUSH-MOUNT
1	67200-88L02-000 67200-93J34-000	TOP MOUNT R/C BOX FLUSH MOUNT R/C BOX	1 -	- 1
2	37290-98L10-000 37290-98L20-000 37290-98L00-000	PANEL ASSY, MAIN SWITCH VERTICAL PANEL ASSY, MAIN SWITCH HORIZONTAL MAIN SWITCH PANEL		1
3	37803-98L00-000	EMERGENCY SWITCH PANEL		*1
4	36620-93JA0-000 36620-93JB0-000 36620-93JC0-000 36620-93JD0-000 36620-93JE0-000	MAIN WIRING HARNESS MAIN WIRING HARNESS MAIN WIRING HARNESS WIRE ASSY, REMOTE CONTROL EXT WIRE ASSY, REMOTE CONTROL EXT	6.5m / 21.3ft 5.0m / 16.4ft 8.0m / 26.2ft 2.0m / 6.5ft 3.0m / 9.8ft	1   Optional
5	67320-93J00-000 67320-93J10-000 67320-93J20-000 67320-93J30-000 67320-93J40-000 67320-93J50-000 67320-93J60-000 67320-93J70-000 67320-93J80-000	R/C CABLE	2.4m / 8.0ft 3.0m / 9.8ft 3.6m / 12.0ft 4.2m / 14.0ft 4.8m / 16.0ft 5.4m / 18.0ft 6.1m / 20.0ft 6.7m / 22.0ft 7.3m / 24.0ft	Select two
7	37171-98L02-000 37171-98L11-000	CONTROLLER ASSY, KLS 433 CONTROLLER ASSY, KLS 315		1
8	36623-98LA0-000	HARNESS ASSY, KLS CONT		1
9	38500-93J90-000	BUZZER ASSY		1
10	38860-96L01-000	RELAY ASSY, KLS		1
11	37172-96L03-000 37172-96L11-000	KEY FOB 433 MHz KEY FOB 315 MHz		2

\*Only if using 37100-98L00-000



## DUAL ENGINE with CAN Connection



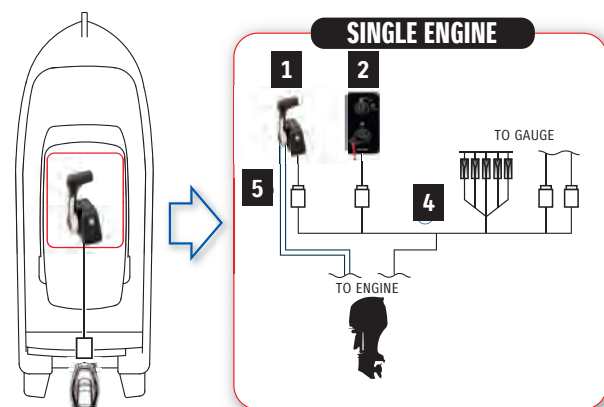
For DUAL ENGINE (SINGLE STATION, REGULAR KEY)		Required Quantity		
PART NUMBER	PART NAME	LENGTH	TOP MOUNT	SIDE MOUNT
1	67200-88L12-000 67200-93J70-000	TOP MOUNT R/C BOX DUAL REMOTE CONTROL ASSY	1 -	- 2
2	37100-98L30-000	PANEL ASSY, MAIN SWITCH MULTI	1	-
4	36620-93JA0-000	MAIN WIRING HARNESS	6.5m / 21.3ft	2
	36620-93JB0-000	MAIN WIRING HARNESS	5.0m / 16.4ft	
	36620-93JC0-000	MAIN WIRING HARNESS	8.0m / 26.2ft	
	36620-93JD0-000	WIRE ASSY, REMOTE CONTROL EXT	2.0m / 6.5ft	
5	36620-93JE0-000	WIRE ASSY, REMOTE CONTROL EXT	3.0m / 9.8ft	Optional
	67320-93J00-000	R/C CABLE	2.4m / 8.0ft	Select four
	67320-93J10-000		3.0m / 9.8ft	
	67320-93J20-000		3.6m / 12.0ft	
	67320-93J30-000		4.2m / 14.0ft	
67320-93J40-000	4.8m / 16.0ft			
5	67320-93J50-000	5.4m / 18.0ft	6.1m / 20.0ft	6.7m / 22.0ft
	67320-93J60-000	6.1m / 20.0ft		
	67320-93J70-000	6.7m / 22.0ft		
	67320-93J80-000	7.3m / 24.0ft		
13	36661-96L40-000	WIRE COMP, CAN	1	1

## For KEYLESS START SYSTEM

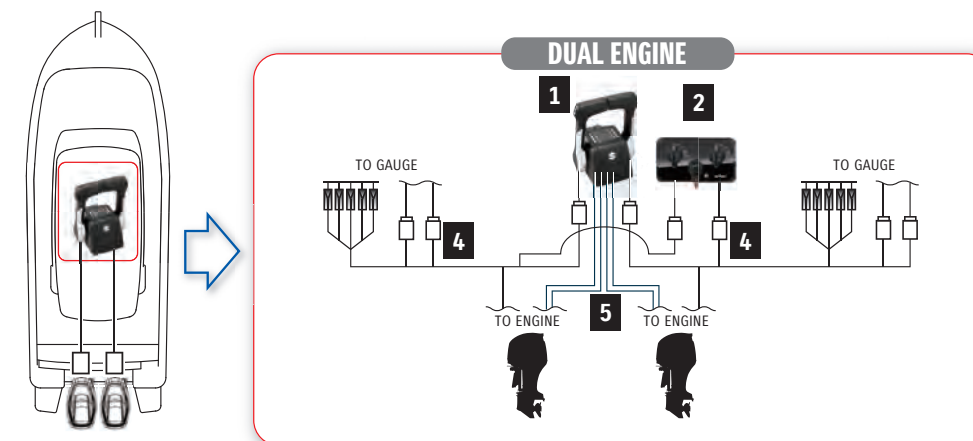
For DUAL ENGINE (SINGLE STATION with KEYLESS SYSTEM)				Required Quantity
PART NUMBER	PART NAME	LENGTH		
1	67200-88L12-000	TOP MOUNT R/C BOX DUAL		1
2	37290-98L00-000	PANEL ASSY, ENG START SW		2
	37803-98L00-000	PANEL ASSY, EMERGENCY SW		1
4	36620-93JA0-000	MAIN WIRING HARNESS	6.5m / 21.3ft	Optional
	36620-93JB0-000	MAIN WIRING HARNESS	5.0m / 16.4ft	
	36620-93JC0-000	MAIN WIRING HARNESS	8.0m / 26.2ft	
	36620-93JD0-000	WIRE ASSY, REMOTE CONTROL EXT	2.0m / 6.5ft	
5	36620-93JE0-000	WIRE ASSY, REMOTE CONTROL EXT	3.0m / 9.8ft	Select four
	67320-93J00-000	R/C CABLE	2.4m / 8.0ft	
	67320-93J10-000		3.0m / 9.8ft	
	67320-93J20-000		3.6m / 12.0ft	
	67320-93J30-000		4.2m / 14.0ft	
	67320-93J40-000		4.8m / 16.0ft	
	67320-93J50-000		5.4m / 18.0ft	
67320-93J60-000	6.1m / 20.0ft			
7	67320-93J70-000	6.7m / 22.0ft	7.3m / 24.0ft	1
	67320-93J80-000	7.3m / 24.0ft		
7	37171-98L02-000	CONTROLLER ASSY, KLS 433		1
	37171-98L11-000	CONTROLLER ASSY, KLS 315		
8	36623-98LA0-000	HARNESS ASSY, KLS CONT		1
9	38500-93J90-000	BUZZER ASSY		2
10	38860-96L01-000	RELAY ASSY, KLS		1
11	37172-96L03-000	KEY FOB 433 MHz		2
	37172-96L11-000	KEY FOB 315 MHz		
12	36621-98L31-000	HARNESS ASSY, KLS DUAL ENG		1



## SINGLE ENGINE with Non-CAN Connection



## DUAL ENGINE with NON-CAN Connection



For SINGLE ENGINE (Single Station)				Required Quantity		
PART NUMBER	PART NAME	LENGTH		Top-MOUNT	FLUSH-MOUNT	SIDE-MOUNT
1	67200-88L02-000 67200-93J34-000 67200-93J70-000	TOP MOUNT R/C BOX FLUSH MOUNT R/C BOX SIDE MOUNT R/C BOX		1 - -	- 1 -	- - 1
2	37100-98L00-000 37100-98L10-000 37100-98L20-000	MAIN SWITCH PANEL IG SWITCH ONLY MAIN SWITCH PANEL VERTICAL MAIN SWITCH PANEL HORIZONTAL		1 (Select type)		-
3	37803-98L00-000	PANEL ASSY, EMERGENCY SWITCH		*1		-
4	36620-93J70-000 36620-93J80-000 36620-93J90-000 36620-93J12-000 36620-93J41-000	MAIN WIRING HARNESS MAIN WIRING HARNESS EXTENSION	6.5m / 21.3ft 5.0m / 16.4ft 8.0m / 26.2ft 2.0m / 6.5ft 3.0m / 9.8ft	Select one Optional. Select if necessary.		
5	67320-93J00-000 67320-93J10-000 67320-93J20-000 67320-93J30-000 67320-93J40-000 67320-93J50-000 67320-93J60-000 67320-93J70-000 67320-93J80-000	R/C CABLE	2.4m / 8.0ft 3.0m / 9.8ft 3.6m / 12.0ft 4.2m / 14.0ft 4.8m / 16.0ft 5.4m / 18.0ft 6.1m / 20.0ft 6.7m / 22.0ft 7.3m / 24.0ft	Select two		

\*Only needed if using 37100-98L00

For DUAL ENGINE (Single station)					Required Qty	
PART NUMBER	PART NAME	LENGTH	Qty		Single Station	
1	67200-88L12-000	TOP MOUNT R/C BOX	1		1	
2	37100-98L00-000 37100-98L30-000	MAIN SWITCH PANEL IG SWITCH ONLY DUAL IGNITION WITH E/S SWITCH	2 1		Select -98L00 OR -98L30	
3	37803-98L00-000	PANEL ASSY, EMERGENCY SWITCH	*1		*1	
4	36620-93J70-000 36620-93J80-000 36620-93J90-000 36620-93J12-000 36620-93J42-000	MAIN WIRING HARNESS MAIN WIRING HARNESS EXTENSION	6.5m / 21.3ft 5.0m / 16.4ft 8.0m / 26.2ft 2.0m / 6.5ft 3.0m / 9.8ft	Select two Optional	2 -	
5	67320-93J00-000 67320-93J10-000 67320-93J20-000 67320-93J30-000 67320-93J40-000 67320-93J50-000 67320-93J60-000 67320-93J70-000 67320-93J80-000	R/C CABLE	2.4m / 8.0ft 3.0m / 9.8ft 3.6m / 12.0ft 4.2m / 14.0ft 4.8m / 16.0ft 5.4m / 18.0ft 6.1m / 20.0ft 6.7m / 22.0ft 7.3m / 24.0ft	Select four	4	

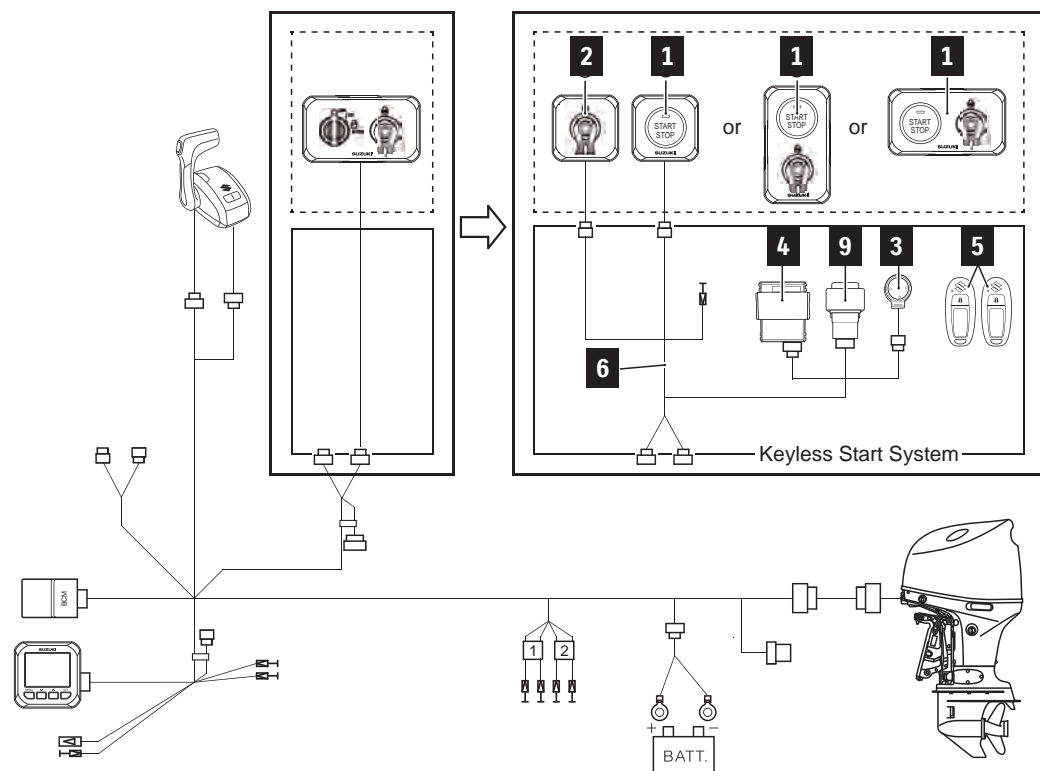
\*Only needed if using 37100-98L00



# INSTALLATION DIAGRAM

## KEYLESS START SYSTEM for Suzuki Precision Control or Mechanical Remote Control with CAN Connection

\*SMG4 or SMD is required to use



PART NUMBER	PART NAME	LENGTH	KIT		Total Required Quantity			
			CONTROLLER SET	37101-98L07-000 (433 MHz)	SINGLE	DUAL	TRIPLE	QUAD
37290-98L00-000	MAIN SWITCH PANEL	-	-	-	-	-	-	-
1 37290-98L10-000	MAIN SWITCH PANEL VERTICAL	-	-	-	1	1	1	1
37290-98L20-000	MAIN SWITCH PANEL HORIZONTAL	-	-	-	-	-	-	-
2 37803-98L00-000	EMERGENCY SWITCH PANEL	-	-	-	*1	*1	*1	*1
3 38500-93J90-000	BUZZER	-	1	1	1	1	1	
4 37171-98L02-000	KEYLESS CONTROL UNIT	-	1	1	1	1	1	
37171-98L11-000		-	-	-	-	-	-	
5 37172-96L03-000	KEY FOB	-	2	2	2	2	2	
37172-96L11-000		-	-	-	-	-	-	
6 36623-98LA0-000	KEYLESS CONTROL HARNESS	-	1	1	1	1	1	
9 38860-96L01-000	RELAY ASSY, KLS	-	1	1	1	1	1	
10 37173-96L10-000	HOLDER, KLS PARTS	-	1	1	1	1	1	
11 32980-38F00-000	HOLDER	-	1	1	1	1	1	
12 32851-93J00-000	CUSHION	-	1	1	1	1	1	
- 09407-14407-000	CLAMP, KLS HARNESS	-	1	1	1	1	1	
- 37117-96L00-000	DECAL, KLS	-	2	-	-	-	-	

■ \*Used when using 37290-98L00-000.

# COMPONENT PARTS

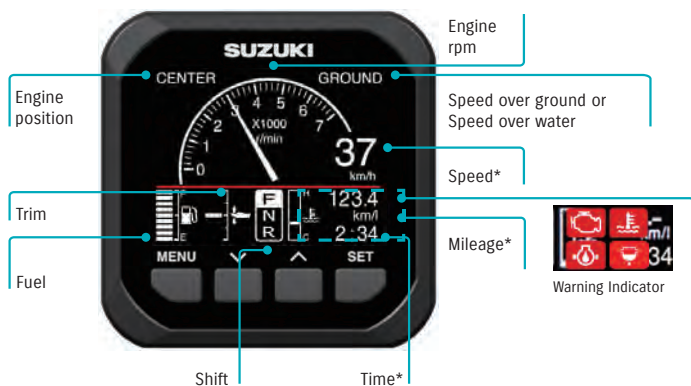


PART NUMBER	PART NAME	NOTE
37290-98L00-000	MAIN SWITCH PANEL	
1 37290-98L10-000	MAIN SWITCH PANEL VERTICAL	
37290-98L20-000	MAIN SWITCH PANEL HORIZONTAL	
2 37803-98L00-000	EMERGENCY SWITCH PANEL	Used when using 37290-98L00-000
3 38500-93J90-000	BUZZER	
4 37171-98L02-000	KEYLESS CONTROL UNIT	433MHz
37171-98L11-000		315MHz
5 37172-96L03-000	KEY FOB	433MHz
37172-96L11-000		315MHz
6 36623-98LA0-000	KEYLESS CONTROL HARNESS	
9 38860-96L01-000	RELAY ASSY, KLS	
10 37173-96L10-000	HOLDER, KLS PARTS	
11 32980-38F00-000	HOLDER	
12 32851-93J00-000	CUSHION	

# SUZUKI MULTI-FUNCTION GAUGE

The Suzuki Multi-function Gauge (SMG4) shows all the necessary information on one, user-friendly screen. Users can view a wide range of important information, including engine rpm, speed and trim angle, engine temp and fuel economy in and total fuel flow for multiple engine installations. The SMG4 also shows alerts from the engine's sensors and warning systems.

## ANALOGUE TACHO & SPEED MODE



## TACHO MODE



- Fuel flow (instantaneous)
- Mileage\* (instantaneous and average)
- Trip time, Trip distance\*
- Engine hour, Voltage, Water temp and more...

## TROLL MODE FUNCTION



- Allows you to control your troll mode from the Multi-Function Gauge

This function is available from year 2019 models. Can only be used by models which are adapted to troll mode.

\* Speed sensor or GPS module required.

	GPS Module	Speed sensor
Speed	✓	✓
Mileage	✓	✓
Trip distance	✓	✓
Time	✓	N/A

## DISPLAY MODES

### DIGITAL TACHO & SPEED MODE



### ANALOGUE SPEED MODE



\*Night mode screen

### FUEL MODE



## FEATURES

### Multilingual menu

SMG4 is available in 13 languages: English, French, Italian, German, Spanish, Swedish, Norwegian, Finnish, Dutch, Portuguese, Danish, Russian, Japanese.



### Automatic Trim

Automatically adjusts trim angle with OBM RPM

Remark: Automatic Trim function is only available for the models mentioned in page 16.



### Demo mode

Shows preinstalled data to demonstrate function of selected screen. (Ideal for boat shows and exhibitions)



**1** GAUGE ASSY,  
MULTI



34011-96L45-000

**2** WIRE COMP,  
EXTENSION



**2-1** 36662-88L10-000  
0.6m / 1.9ft

**2-2** 36662-88L20-000  
1.8m / 5.9ft

**3** HARNESS ASSY,  
NETWORK POWER



36663-88L00-000

**4** CONNECTOR COMP,  
BRANCH



36664-88L00-000

**5** UNIT COMP,  
RESISTOR FEMALE



36665-88L00-000

**6** UNIT COMP,  
RESISTOR MALE



36665-88L10-000

**7** WIRE COMP,  
GAUGE ADAPTER



**7-1** 36667-96L40-000

**7-2** 36667-96L50-000  
for Tank 3-4

**7-3** 36667-96L11-000  
for Mechanical  
Control

**8** SENSOR ASSY,  
PADDLE WHEEL



34190-88L00-000

GPS RECEIVER  
MODULE



39950-88L02-000

**9** WIRE COMP, GAUGE EXT (0.6m)

**36667-96L60-000**  
0.6 m / 1.9ft

**10** ADAPTER COMP, GAUGE

**36661-96L30-000**  
for Dual Engine

**11** ADAPTER,  
GAUGE FOR MULTI



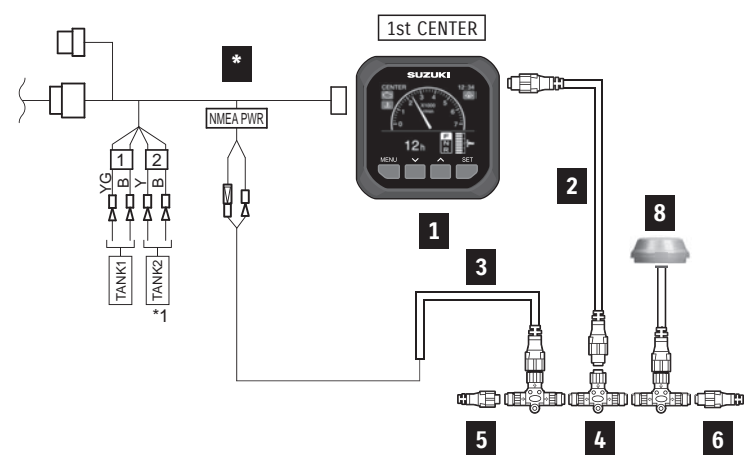
**36665-87L10-000**  
In addition to component of  
[MECHANICAL SINGLE]



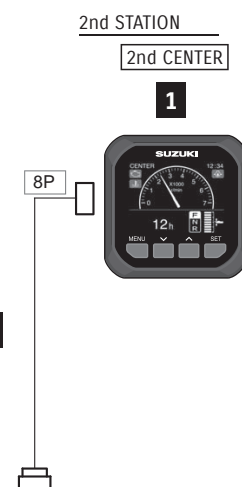
# INSTALLATION DIAGRAM

## SINGLE ENGINE with S.P.C or MECHANICAL CONTROL (CAN Connection)

### SINGLE STATION



### DUAL STATION (S.P.C only)



### TOTAL REQUIREMENT LIST

For SINGLE ENGINE				Total Required Quantity					
	PART NUMBER	PART NAME	LENGTH	SINGLE STATION	SINGLE STATION (Speed over water)	SINGLE STATION (Speed over ground)	DUAL STATION	DUAL STATION (Speed over water)	DUAL STATION (Speed over ground)
1	34011-96L45-000	GAUGE ASSY, MULTI	-	1	1	1	2	2	2
-	36001-88L00-000	CABLE KIT	-	-	1	1	-	1	1
8	34190-88L00-000	SENSOR ASSY, PADDLE WHEEL	-	-	1	-	-	1	-
-	39950-88L02-000	GPS RECEIVER MODULE	-	-	-	1	-	-	1
-	33926-98L00-000	TERMINAL RESISTOR	-	1	1	1	-	-	-
*S.P.C	36623-98L00-000	BCM HARNESS No.1	-	1	1	1	1	1	1
	36624-98L00-000	BCM HARNESS No.2	-	-	-	-	1	1	1
*Mechanical	36620-93JA0-000	MAIN WIRING HARNESS	6.5m/21.3ft	1	1	1	Dual station is not applicable for Mechanical Control.		
	36620-93JB0-000		5.0m/16.4ft						
	36620-93JC0-000		8.0m/26.2ft						

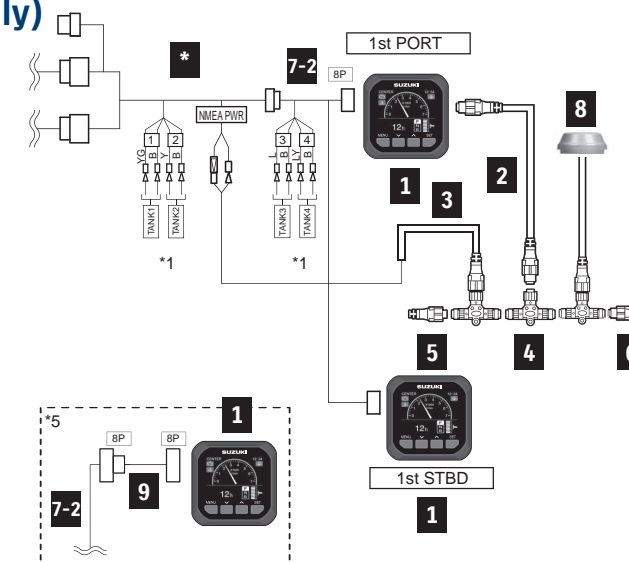
\* BCM Harness No.1 & 2 ⇒ S.P.C. See page 11.  
Main Wiring Harness ⇒ Mechanical Control (CAN Connection). See page 21.

### CABLE KIT COMPONENT

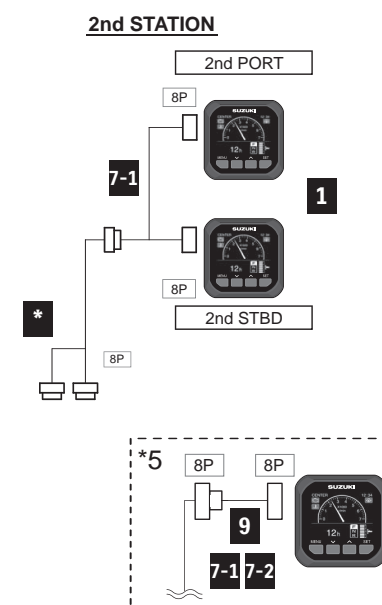
PART NUMBER	PART NAME	LENGTH	Quantity
36001-88L00-000	CABLE KIT	-	-
2 36662-88L10-000	WIRE COMP, EXTENSION	0.6m	1
3 36663-88L00-000	HARNESS ASSY, NETWORK POWER	-	1
4 36664-88L00-000	CONNECTOR COMP, BRANCH	-	1
5 36665-88L00-000	UNIT COMP, RESISTOR FEMALE	-	1
6 36665-88L10-000	UNIT COMP, RESISTOR MALE	-	1

## DUAL ENGINE with S.P.C or MECHANICAL CONTROL (CAN Connection)

### SINGLE STATION (S.P.C only)



### DUAL STATION (S.P.C only)

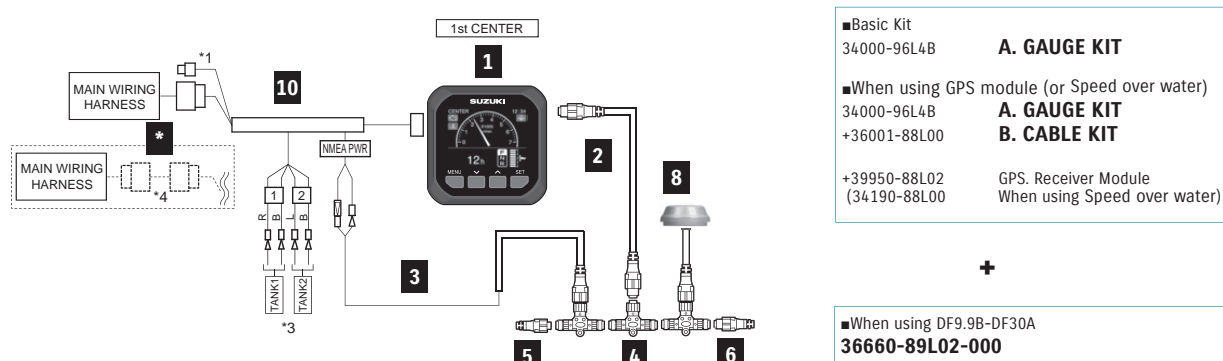


### TOTAL REQUIREMENT LIST

For DUAL ENGINE				Total Required Quantity					
	PART NUMBER	PART NAME	LENGTH	SINGLE STATION	SINGLE STATION (Speed over water)	SINGLE STATION (Speed over ground)	DUAL STATION	DUAL STATION (Speed over water)	DUAL STATION (Speed over ground)
1	34011-96L45-000	GAUGE ASSY, MULTI	-	2	2	2	4	4	4
-	36001-88L00-000	CABLE KIT	-	-	1	1	-	1	1
8	34190-88L00-000	SENSOR ASSY, PADDLE WHEEL	-	-	1	-	-	1	-
-	39950-88L02-000	GPS RECEIVER MODULE	-	-	-	1	-	-	1
9	36667-96L60-000	WIRE COMP, GAUGE EXT	-	-	-	-	Optional		
-	33926-98L00-000	TERMINAL RESISTOR	-	1	1	1	-	-	-
*S.P.C	36667-96L40-000	WIRE COMP, GAUGE ADAPTER (FOR TANK3-4)	-	Select 1			2**		
	36667-96L50-000								
	36623-98L30-000	BCM HARNESS No.1	-	1	1	1	1	1	1
	36624-98L10-000	BCM HARNESS No.2	-	-	-	-	1	1	1
*Mechanical	36620-93JA0-000	MAIN WIRING HARNESS	6.5m/21.3ft	2	2	2	Dual station is not applicable for Mechanical Control.		
	36620-93JB0-000		5.0m/16.4ft						
	36620-93JC0-000		8.0m/26.2ft						
	36665-87L10-000	ADAPTER, GAUGE FOR MULTI	-	1***	1***	1***	-	-	-

\* BCM Harness No.1 & 2 ⇒ S.P.C. See page 11.  
Main Wiring Harness ⇒ Mechanical Control (CAN Connection). See page 21.  
\*\* 36667-96L40 x 1 + 36667-96L50 x 1 or 36667-96L40 x 2  
\*\*\* Please refer to Rigging Manual for installation.

## SINGLE ENGINE with MECHANICAL CONTROL (Non-CAN Connection)

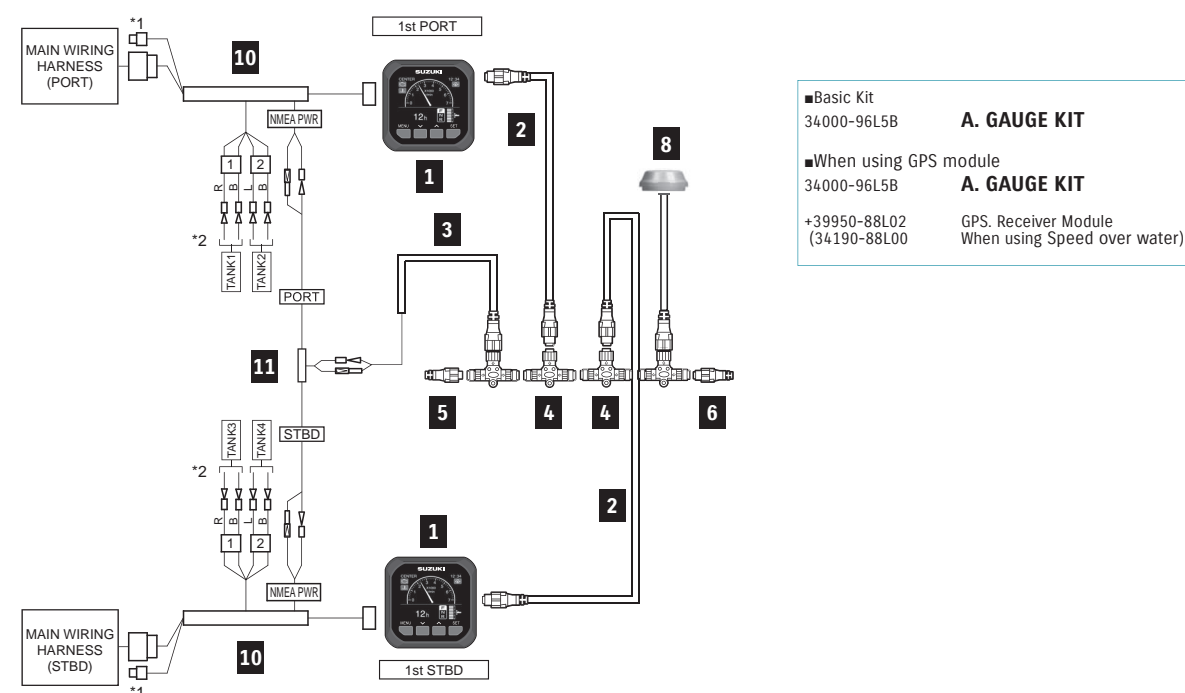


For MECHANICAL CONTROL & SINGLE ENGINE			KIT		Total Required Quantity A (+ B) <->
PART NUMBER	PART NAME	LENGTH	A. GAUGE KIT 34000-96L4B-000	B. CABLE KIT 36001-88L00-000	
1	34011-96L44-000	GAUGE ASSY, MULTI	1	-	1
2-1	36662-88L10-000	WIRE COMP, EXTENSION	-	1	(1)
2-2	36662-88L20-000	WIRE COMP, EXTENSION	-	-	-
3	36663-88L00-000	HARNES ASSY, NETWORK POWER	-	1	(1)
4	36664-88L00-000	CONNECTOR COMP, BRANCH	-	1	(1)
5	36665-88L00-000	UNIT COMP, RESISTOR FEMALE	-	1	(1)
6	36665-88L10-000	UNIT COMP, RESISTOR MALE	-	1	(1)
8	34190-88L00-000	SENSOR ASSY, PADDLE WHEEL	-	-	(1)
	39950-88L02-000	GPS RECEIVER MODULE	-	-	(1)
10	36661-96L30-000	ADAPTER COMP, GAUGE	1	-	1
*	36660-89L02-000	SET, ENG TO INTERFACE WIRE	-	-	<1>

■ \*( ) parts are required when using GPS module or Speed sensor.  
 ■ \* < > part are required when using with DF9.9B to 30A.



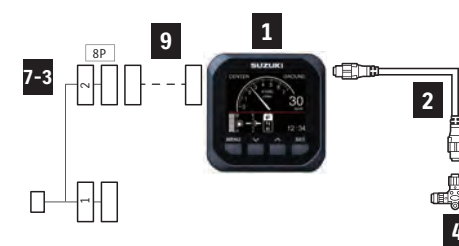
## DUAL ENGINE with MECHANICAL CONTROL (Non-CAN Connection)



For MECHANICAL CONTROL & DUAL ENGINE			KIT	Total Required Quantity A (+ B)
PART NUMBER	PART NAME	LENGTH	A. GAUGE KIT 34000-96L5B-000	
1	34011-96L44-000	GAUGE ASSY, MULTI	2	2
2-1	36662-88L10-000	WIRE COMP, EXTENSION	2	2
2-2	36662-88L20-000	WIRE COMP, EXTENSION	-	-
3	36663-88L00-000	HARNES ASSY, NETWORK POWER	1	1
4	36664-88L00-000	CONNECTOR COMP, BRANCH	2	2
5	36665-88L00-000	UNIT COMP, RESISTOR FEMALE	1	1
6	36665-88L10-000	UNIT COMP, RESISTOR MALE	1	1
8	34190-88L00-000	SENSOR ASSY, PADDLE WHEEL	-	(1)
	39950-88L02-000	GPS RECEIVER MODULE	-	(1)
10	36661-96L30-000	ADAPTER COMP, GAUGE	2	2
11	36665-87L10-000	ADAPTER, GAUGE FOR MULTI	1	1

■ \*( ) parts are required when using GPS module or Speed sensor.

## ADDITIONAL GAUGE COMPONENTS (MECHANICAL)



ADDITIONAL GAUGE COMPONENTS (MECHANICAL)				Total Required Quantity
PART NUMBER	PART NAME	LENGTH		
1	34011-96L45-000	GAUGE ASSY, MULTI	-	1
2-1	36662-88L10-000	WIRE COMP, EXTENSION	0.6m	1
2-2	36662-88L20-000	WIRE COMP, EXTENSION	1.8m	1
4	36664-88L00-000	CONNECTOR COMP, BRANCH	-	1
7-3	36667-96L11-000	WIRE COMP, DUAL GAUGE ADAPTER	-	1
9	36667-96L60-000	WIRE, GAUGE EXT	0.6m	(1)

Please use "36667-96L60-000 WIRE, GAUGE EXT" as an extension between "34011-96L45" and "36667-96L11"



## FishHunter™ Drive

The FishHunter™ Drive is a feature for Furuno NAVpilot-300 Autopilot, developed exclusively for Suzuki Drive-By-Wire engines. With a simple software update, it offers enhanced autopilot and engine controls which anglers will find highly valuable while jigging or trolling. It is available for configurations of up to 4 engines.



The following items are required to use the FishHunter™ Drive:

Supplier	Product		Note
SUZUKI	Outboard Motor (DBW models from Year 2022)		
	Gateway	34923-96L13	
	Boat Control Module (BCM)	36770-98L04	Included in the DBW kits. See pages 10-17.
Furuno	NAVpilot-300		
	SATELLITE COMPASS™ / GPS + Heading Sensor		
	Furuno multi function display		Display is required for Route Smoothing™.

## FEATURES



### Speed Control

The boat will maintain a preset speed by adjusting engine RPM.



### Route Smoothing™

Automatically controls the speed at waypoints for smooth turns while navigating a designated route. On approach to the final waypoint, the boat will slow down and activate Point Lock™ automatically to hold on the destination.



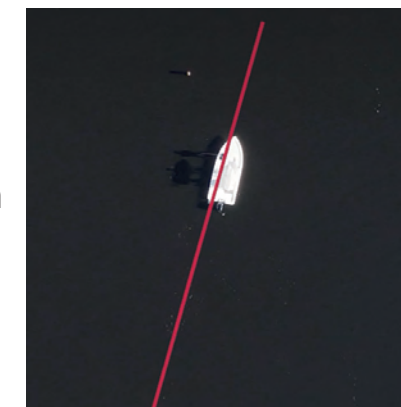
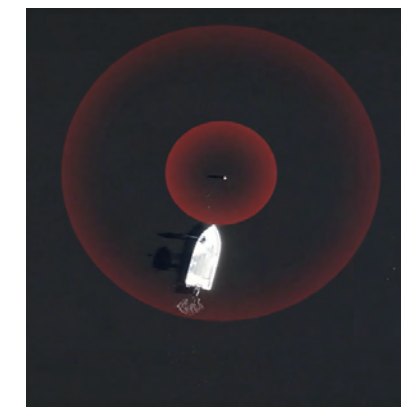
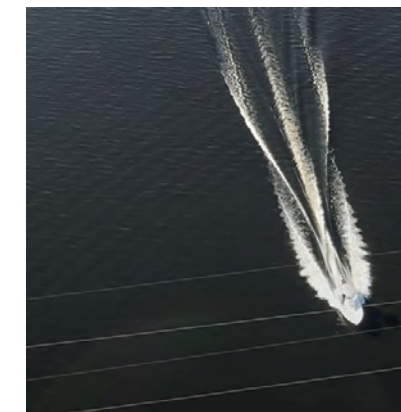
### Point Lock™

Allows the vessel to easily keep a fixed position by controlling the steering and shift, limiting the effects of wind and current.



### SABIKI™ Lock

Expands upon the NAVpilot-300's SABIKI™ function by controlling both the steering and throttle to maintain stern direction, freeing the angler to focus on jigging and other vertical fishing.





# SUZUKI DIAGNOSTIC SYSTEM MOBILE PLUS

The **Suzuki Diagnostic System Mobile Plus (SDSM+)** is an app that combines the existing functions of the former SDSM app with new, unique features to support our customer's marine life and experience. With a few screen taps and a simple QR code scan, this app guides customers from boat day planning, all the way to their next maintenance session. The SDSM+ is free of charge and available for anyone with a working smartphone.



## What can SDSM+ Do?

- Provide boating condition forecasts all in one screen.
  - Guide customer through pre-departure inspection.
  - Receive and display engine condition by scanning a QR code. The app also allows the customer to send this data to their dealer by e-mail.\*
- \*SMG4 (Page 34) or SMD is necessary for this feature.

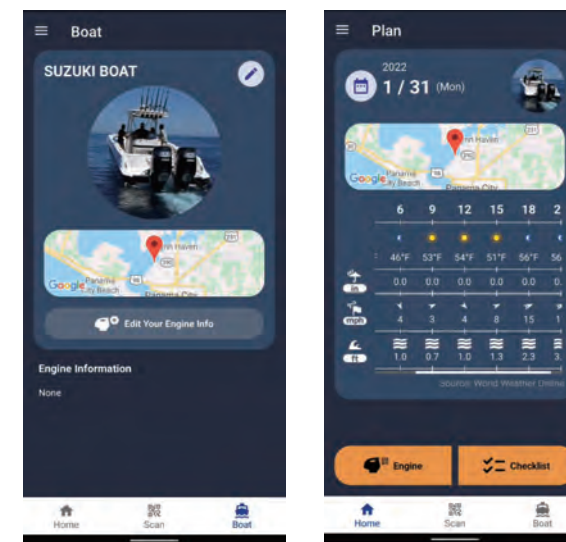
Find out more at global website here! →

Or go to [https://www.globalsuzuki.com/marine/sdsm\\_plus/](https://www.globalsuzuki.com/marine/sdsm_plus/)



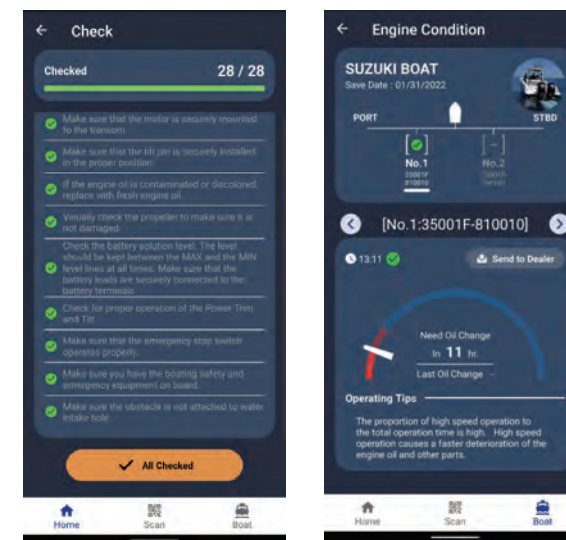
## Before the departure day

Customer will first register their boat and engine(s) information on to the app. Then, customer can select a boating date and destination to check the weather forecast.



## On the departure day

The app will show a pre-departure checklist to inspect the boat and engine(s). Customer can also scan the QR code on the SMG4 or SMD to check engine condition data. The app will also provide operating tips based on piloting tendencies.



## After the boating

Customer can scan the QR code again to check the latest engine condition. After checking, the customer can e-mail the data to an authorized Suzuki dealer. The dealer can use this data to prepare for the customer's next maintenance session.



\*QR Code is a registered trademark of DENSO WAVE.

The SDSM+ app is subject to updates and other changes. Images on this catalogue may differ from the actual screen.



# ANALOGUE INSTRUMENT

## TACHOMETER



White



Black



White



Black



White



Black

**34200-93J14-000** (White)

**34200-93J02-000** (Black)

Gauge Size 4" (101.6mm)

Applicable Model DF25A-250

Caution system alert with a monitor lamp lighting on when an abnormal engine condition occurs. Refer to SERVICE MANUAL for the detail.

**34200-93J54-000** (White)

**34200-93J43-000** (Black)

Gauge Size 4" (101.6mm)

Applicable Model DF40A-200A

Exclusive for SUZUKI Troll Mode System. Automatically switches to low RPM scale when the SUZUKI Troll Mode System is activated.

**34200-93J34-000** (White)

**34200-93J22-000** (Black)

Gauge Size 4" (101.6mm)

Applicable Model DF8A-30A,DT30/40W

Full-scale 7000-RPM TACHOMETER can be used on electric-start models by using 4, 6 or 12 pole switch on rear of meter.

## TRIM GAUGE



White



Black

**34800-93J13-000** (White)

**34800-93J02-000** (Black)

Gauge Size 2" (50.8mm)

Applicable Model DF25A-250

Magnetic-type gauge shows trim angle for optimum performance and efficiency.

## FUEL GAUGE



White



Black

**34300-93J14-000** (White)

**34300-93J03-000** (Black)

Gauge Size 2" (50.8mm)

FUEL GAUGE alone works with the US Standard 240-30Ω sending unit.

## HOUR METER



White



Black

**34500-93J13-000** (White)

**34500-93J02-000** (Black)

Gauge Size 2" (50.8mm)

Applicable Model DF9.9B-250, DT30/40  
12-Volt-electric-motor driven meter.

## SPEEDOMETER

\*Each speedometer includes vinyl tube, hard ware, and installation manual.



White



Black

(White)

(Black)

**34100-93J13-000** **34100-93J02-000**

Gauge Size 4" (101.6mm)

Maximum Speed 130km/h, 80mph

Bourdon-tube type speedometer with readings in km/h and mph.



White



Black

(White)

(Black)

**34100-93J33-000** **34100-93J22-000**

Gauge Size 4" (101.6mm)

Maximum Speed 80km/h, 50mph

Bourdon-tube type speedometer with readings in km/h and mph.



White



Black

(White)

(Black)

**34100-93J53-000** **34100-93J42-000**

Gauge Size 4" (101.6mm)

Maximum Speed 80km/h, 40knots

Bourdon-tube type speedometer with readings in km/h and knots.



**34100-93J62-000**

Gauge Size 4" (101.6mm)

Background White

Maximum Speed 120km/h, 65knots

Bourdon-tube type speedometer with readings in km/h and knots.

## SPEEDOMETER SENDER ASSY



**34190-95500-000**



**34190-87D00-000**

## VOLTMETER



White



Black

**34600-93J13-000** (White)

**34600-93J02-000** (Black)

Gauge Size 2" (50.8mm)

Applicable Model DF9.9B-250, DT30/40

## WATER-PRESSURE GAUGE



White



Black

**34650-93J33-000** (White)

**34650-93J22-000** (Black)

Gauge Size 2" (50.8mm)

Applicable Model DF40A-250

Select an appropriate INSTALLATION KIT for each model.

## INSTALLATION KIT for WATER-PRESSURE GAUGE



**34660-90J04-000**

Applicable Model DF40A-140B

**34660-96J01-000**

Applicable Model DF150A/175A/200A

**34660-93J02-000**

Applicable Model DF200-250



# STEERING



## TILLER HANDLE KIT



**63002-88L2A-YAY**  
Applicable Model  
DF40A/50A

**63002-88L18-YAY**  
Applicable Model  
DF60A/50AV/60AV

**63002-87L20-YAY**  
Applicable Model  
DF70A-90A/100B  
(Year 2022~)

**63002-99L00-YAY**  
Applicable Model  
DF100C/115BT

## Main features



**Tachometer with warning indicators**



**Three-position angle adjustable bracket**



**Troll mode switch**  
- Activates SUZUKI Troll Mode System and controls RPM from idling engine speed up to 1200rpm at every 50rpm.



**Power trim & tilt switch and throttle grip friction adjuster**



## DUAL-ENGINE TIE-BAR



**67600-90J00-000**  
Stainless steel  
Applicable Model DF100C-140B

**67600-99L00-000**  
Stainless steel  
Applicable Model DF115BG/140BG

**67600-93J00-000**  
Stainless steel  
Applicable Model DF150A-200A/  
200-250  
DF150AP-200AP

## STEERING EXTENSION KIT



**67630-93J00-000**  
for installation of DUAL-ENGINE TIE-BAR  
(67600-93J00-000)  
Applicable Model DF150A-200A/200-250

## DRAG-LINK KIT \*67700- includes Steering Cable Seal



**67700-87L10-000**  
Applicable Model DF70A-90A/100B  
(Year 2022~)

**67700-93J00-000**  
Applicable Model DF40A-60A/  
200-250

**67700-96J00-000**  
Applicable Model DF150A-200A/  
150AP-200AP

**67701-87J11-000**  
Applicable Model DF40A-60A/  
200-250

**67701-87L10-000**  
Applicable Model DF70A-90A/100B  
(Year 2022~)

**67701-90J01-000**  
Applicable Model DF100C-140B

**67701-96J00-000**  
Applicable Model DF150A-200A/  
150AP-200AP

**67701-94420-000**  
Applicable Model DT25K/30

**67701-94L00-000**  
Applicable Model DF25A/30A

**67701-99J02-000**  
Applicable Model DF8A-DF20A

## STEERING-BRACKET ATTACHMENT



**43755-87L00-000**  
Applicable Model DF70A-90A/100B

**43755-88L00-000**  
Applicable Model DF40A-60A

**43755-94L00-000**  
Applicable Model DF25A-30A

**43755-99J01-000**  
Applicable Model DF8A-20A

**43755-96320-000**  
Applicable Model DT25K/30/40W

## STEERING CABLE SEAL

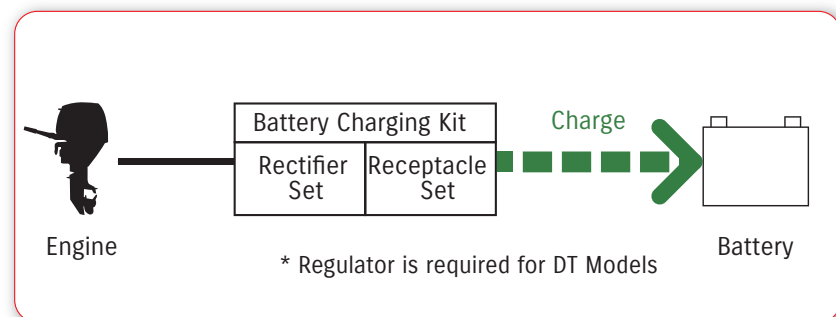


**41161-94400-000**  
Applicable Model DF8A-250,  
DT25K-40W

# ELECTRICAL PARTS

## BATTERY CHARGING KIT

· Optional equipment for charging Battery



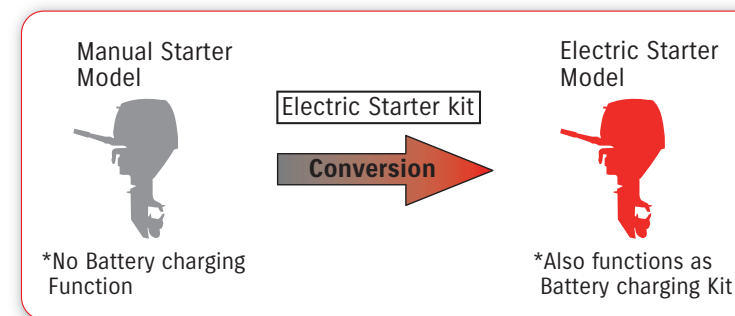
### DF series

APPLICABLE MODEL	BATTERY CHARGING KIT └ RECTIFIER and REGULATOR SET └ RECEPTACLE KIT
DF4A/5A/6A	32000-97L10-000 └ 32801-97L01-000 └ 39600-97L10-000
DF8A/9.9A	32000-99J03-000 └ 32801-95J03-000 └ 39600-94J03-000
DF9.9B/15A/20A	32000-89L03-000 └ 32801-89L01-000 └ 39600-89L02-000
DF25A/30A	32000-94L03-000 └ 32800-88L01-000 └ 39600-94L01-000 └ 32815-94L01-000 (BRACKET) └ 01550-06207-000 (BOLT)

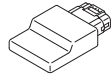


## ELECTRIC STARTER KIT

\* Electric Starter Kit functions as Battery charging Kit as well.



### DF series

APPLICABLE MODEL	ELECTRIC STARTER KIT
DF8A/9.9A	31000-99J03-000
DF25A/30A	31000-94L09-000
DF9.9B/15A/20A	31000-89L09-000 (~Year 2017) 31000-89L23-000 (Year 2018~)
	DF9.9B 33930-89L40-000 DF15A 33930-89L00-000 DF20A 33930-89L20-000 DF20A(P40) 33930-89L60-000

\*When fitting to a non-Electric Starter model, please ensure to also replace the ECM with the ones shown here.

## BATTERY ISOLATOR LEAD SET

Optional equipment for charging additional battery.

### 33830-98J11-000

Applicable Model DF150A-200A/  
150AP-300AP/  
325A/350A/  
300BMD/350AMD



# FUEL SYSTEM

## FUEL TANK

NOTE : These tanks do not meet US-EPA requirements.



### 65000-99100-000

12-liter plastic tank without fuel-level gauge

Applicable Model DT9.9AK/25K/40WK  
(Gasoline tank for Kerosene models)

### 65000-94L10-000

25-liter plastic tank with a fuel-level gauge

Applicable Model DF8A-140B, DT9.9AK-40W/WR  
(Kerosene tank for Kerosene models)

### 65000-89L10-000

12-liter plastic tank

Applicable Model DF4A-20A

## REPLACEMENT FUEL CAP

NOTE : Not US-EPA compatible.

### 65520-99100-000

Applicable Model DF5A-20A, DT9.9-40W

## FUEL-HOSE SOCKET



### 65750-98506-000

Metal, Inner diameter: 11.2 mm

Applicable Model DT9.9AK/25K/40WK



### 65750-87J11-000

Plastic, Inner diameter: 6.6 mm

Applicable Model DF4A/8A-30A



### 65750-95501-000

Metal, Inner diameter: 13.0 mm

Applicable Model DF8A/R-140B, DT9.9AK-25K/40WK

## FUEL CONNECTOR



### 65720-986L0-000

Engine side, Plastic

Applicable Model DF4A



### 65740-95D01-000

Tank side, Outer diameter: 13 mm, 1/4"NPT

Applicable Model DF8A/R-140B, DT9.9/K-40W/WR/WK

## SQUEEZE PUMP



### 65770-99J03-000

Small-in & Large-out

Applicable Model DF5A-6A, DT9.9AK/15AK/40WK

### 65770-90J13-000

Large-in & Large-out

Applicable Model DF8A-20A/40A-140B, DT9.9AK/15AK/40WK

### 65770-93J13-000

Large-in & Large-out

Applicable Model DF150A-350A

### 65770-87DL1-000

Large-in & Small-out

Applicable Model DT9.9A-40W

### SQUEEZE PUMP

(US-EPA compatible.)

### 65770-94J04-000

Small-in & Large-out

Applicable Model DF6A

### 65770-90J04-000

Large-in & Large-out

Applicable Model DF8A-140B

### 65770-93J04-000

Large-in & Large-out

Applicable Model DF150A-350A

## FUEL-HOSE

### 09352-73124-00D

I/D 7.3 , O/D 12.5

LENGTH 4,000mm

Not US-EPA compatible

## FUEL-HOSE COMPONENT



### 65700-87J19-000

for 25-liter plastic tank to engine

Applicable Model DF8A-20A

### 65700-90J18-000

for 25-liter plastic tank to engine

Applicable Model DF40A-60A

### 65700-90J24-000

for 25-liter plastic tank to engine

Applicable Model DF70A-140B

### 65700-93J14-000

for fuel tank to engine

Applicable Model DF150A-350A

### 65700-87DL3-000

for 25-liter plastic tank to engine

Applicable Model DT9.9A-40W

### 65700-95D08-000

for 12-liter plastic tank to engine (gasoline)

Applicable Model DT9.9AK/15AK/25K/40WK

### 65700-96364-000

for 25-liter plastic tank to engine (kerosene)

Applicable Model DT9.9AK/15AK/40WK

### 65700-94440-000

with fuel filter (gasoline)

Applicable Model DT9.9AK/15AK/40WK

### 65700-94434-000

with fuel filter (kerosene)

Applicable Model DT9.9AK/15AK

Only for P36 ver.

### FUEL-HOSE COMPONENT

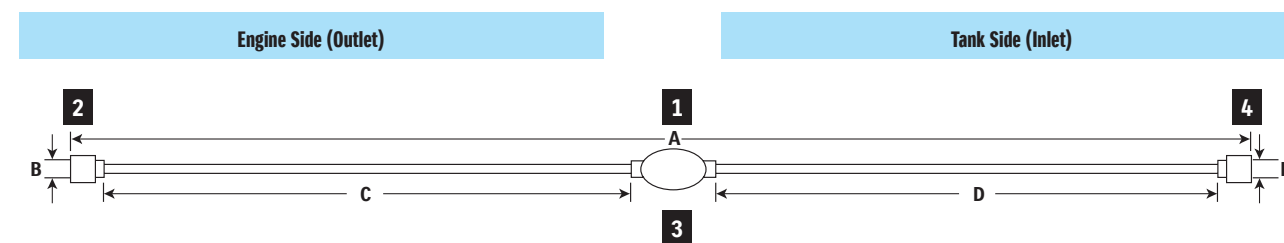
(US-EPA compatible.)

### 65700-87J28-000

Applicable Model DF5A-30A

### 65700-88L06-000

Applicable Model DF40A-60A



## FUEL-HOSE COMPONENT Chart

1	FUEL-HOSE COMPONENT	2	FUEL-HOSE SOCKET Metal	Plastic	3	SQUEEZE PUMP	4	FUEL-HOSE SOCKET Metal
---	---------------------	---	------------------------	---------	---	--------------	---	------------------------



1		2		-			3		-			4			
FUEL HOSE COMPONENT		SOCKET		HOSE			SQUEEZE PUMP		HOSE			SOCKET			
Part Number	A Length (mm)	Material	B I/D (mm)	Part Number	C Length (mm)	I/D (mm)	O/D (mm)	SQUEEZE PUMP	D Length (mm)	I/D (mm)	O/D (mm)	Material	E I/D (mm)	Part Number	
65700-87J19-000	1970	Plastic	6.6	65750-87J11-000	700	7.3	12.5	65770-90J13-000	1100	7.3	12.5	Metal	13.0	65750-95501-000	
65700-90J18-000	1250	(no socket)	-	-	(no hose)	-	-	65770-90J13-000	1100	7.3	12.5	Metal	13.0	65750-95501-000	
65700-90J24-000	1930	(no socket)	-	-	700	7.3	12.5	65770-90J13-000	1100	7.3	12.5	Metal	13.0	65750-95501-000	
65700-93J14-000	3100	(no socket)	-	-	750	9.0	15.0	65770-93J13-000	2250	Large	9.0	15.0	(no socket)	-	
65700-87DL3-000	2550	Metal	11.2	65750-98506-000	300	Small	5.3	10.5	65770-87DL1-000	2090	Large	7.3	12.5	Metal	13.0
65700-95D08-000	2550	Metal	13.0	65750-95501-000	300	7.3	12.5	65770-99J03-000	2090	5.3	10.5	Metal	11.2	65750-98506-000	
65700-96364-000	2620	Metal	11.2	65750-98506-000	300	5.3	10.5	-	2250	7.3	12.5	Metal	13.0	65750-95501-000	
65700-94440-000	3100	Metal	13.0	65750-95501-000	300	7.3	12.5	65770-90J13-000	2600	7.3	12.5	-	-	-	
65700-94434-000	3100	Plastic	13.8	65750-94404-000	3000	7.3	12.5	-	-	-	-	-	-	-	
65700-87J28-000	2000	Plastic	6.6	65750-87J11-000	700	7.3	12.5	65770-90J03-000	1100	7.3	12.5	Metal	13.0	65750-95501-000	
65700-88L06-000	1280	(no socket)	-	-	(no hose)	-	-	65770-90J03-000	1100	7.3	12.5	Metal	13.0	65750-95501-000	

## WATER SEPARATOR / FUEL FILTER



### 65900-98J11-000

Applicable Model DF5A-DF140B, DT9.9A-DT40

### 65900-98J21-000

Applicable Model DF150A-DF350A

## WATER SEPARATOR/FUEL FILTER ELEMENT SET



### 65910-98J01-000

Applicable Model DF5A-DF350A, DT9.9A-DT40



# SUZUKI PROPELLERS

## WATERGRIP

WATERGRIP is a stainless-steel propeller series offering accurate response to User operation. Converting engine power into propulsion with high efficiency, this propeller series meets our customer's demand for bigger, faster, more powerful outboards. The WATERGRIP propeller series employs a new interchangeable and square shaped propeller bush that minimises power loss in delivery.

\*This picture was taken remotely

### WATERGRIP



The WATERGRIP series will be the new standard for Suzuki propellers. The interchangeable square-shaped bush system is designed for quick and easy replacement when required, and also accurately and efficiently converts power from the engine to thrust through the propeller.

### WATERGRIP DUAL



Our flagship models, the DF350A, DF325A and DF300B, introduced the Suzuki Dual Prop System, an industry-leading technology, which delivers outstanding and exciting performance. The two contra-rotating propellers, operating simultaneously, enables greater conversion efficiency as well as better stability, grip, and manoeuvrability.

### WATERGRIP SPORT



The WATERGRIP SPORT propellers feature a high rake blade design for excellent acceleration and exceptional top speed. These propellers are ideal for lightweight sports boats as they give remarkably stable thrust when turning for superior manoeuvrability.



#### PROPELLER BUSH ADVANTAGES



Applicable Model : DF150/150AP, DF175/DF175AP, DF200/DF200AP, DF225, DF250/DF250AP, DF300AP

Type	Material	Blade	Diameter		Pitch		Rotation*	Part number
			in	(mm)	in	(mm)		
Watergrip	Stainless	3	16	(406.4)	15	(381)	RR	58700-93L81-000
Watergrip	Stainless	3	16	(406.4)	17	(431.8)	RR	58700-93L01-000
Watergrip	Stainless	3	16	(406.4)	18 1/2	(469.9)	RR	58700-93L11-000
Watergrip	Stainless	3	16	(406.4)	20	(508)	RR	58700-93L21-000
Watergrip	Stainless	3	16	(406.4)	21 1/2	(546.1)	RR	58700-93L31-000
Watergrip	Stainless	3	16	(406.4)	23	(584.2)	RR	58700-93L41-000
Watergrip	Stainless	3	16	(406.4)	24 1/2	(622.3)	RR	58700-93L51-000
Watergrip	Stainless	3	16	(406.4)	26	(660.4)	RR	58700-93L61-000
Watergrip	Stainless	3	16	(406.4)	27 1/2	(698.5)	RR	58700-93L70-000
Watergrip	Stainless	3	16	(406.4)	17	(431.8)	CR	58800-93L00-000
Watergrip	Stainless	3	16	(406.4)	18 1/2	(469.9)	CR	58800-93L10-000
Watergrip	Stainless	3	16	(406.4)	20	(508)	CR	58800-93L20-000
Watergrip	Stainless	3	16	(406.4)	21 1/2	(546.1)	CR	58800-93L30-000
Watergrip	Stainless	3	16	(406.4)	23	(584.2)	CR	58800-93L40-000
Watergrip	Stainless	3	16	(406.4)	24 1/2	(622.3)	CR	58800-93L50-000
Watergrip	Stainless	3	16	(406.4)	26	(660.4)	CR	58800-93L60-000
Watergrip	Stainless	3	15 1/2	(393.7)	17	(431.8)	RR	58700-96J00-000
Watergrip	Stainless	3	15 1/4	(387.4)	19	(482.6)	RR	58700-96J10-000
Watergrip	Stainless	3	15	(381)	21	(533.4)	RR	58700-96J20-000
Watergrip	Stainless	3	14 3/4	(374.7)	23	(584.2)	RR	58700-96J30-000
Watergrip	Stainless	3	14 1/2	(368.3)	25	(635)	RR	58700-96J40-000
Watergrip	Stainless	3	14 1/2	(368.3)	27	(685.8)	RR	58700-96J50-000
Watergrip	Stainless	3	15 1/2	(393.7)	17	(431.8)	CR	58800-96J00-000
Watergrip	Stainless	3	15 1/4	(387.4)	19	(482.6)	CR	58800-96J10-000
Watergrip	Stainless	3	15	(381)	21	(533.4)	CR	58800-96J20-000
Watergrip	Stainless	3	14 3/4	(374.7)	23	(584.2)	CR	58800-96J30-000
Watergrip	Stainless	3	14 1/2	(368.3)	25	(635)	CR	58800-96J40-000
Watergrip	Stainless	3	14 1/2	(368.3)	27	(685.8)	CR	58800-96J50-000
Watergrip	Stainless	4	15 1/4	(387.4)	18	(457.2)	RR	58700-93J00-000
Watergrip	Stainless	4	15 1/4	(387.4)	20	(508)	RR	58700-93J10-000
Watergrip	Stainless	4	15 1/4	(387.4)	22	(558.8)	RR	58700-93J20-000
Watergrip	Stainless	4	15 1/4	(387.4)	24	(609.6)	RR	58700-93J30-000
Watergrip	Stainless	4	15 1/4	(387.4)	26	(660.4)	RR	58700-93J40-000
Watergrip	Stainless	4	15 1/4	(387.4)	20	(508)	CR	58800-93J10-000
Watergrip	Stainless	4	15 1/4	(387.4)	22	(558.8)	CR	58800-93J20-000
Watergrip	Stainless	4	15 1/4	(387.4)	24	(609.6)	CR	58800-93J30-000
Watergrip	Stainless	4	15 1/4	(387.4)	26	(660.4)	CR	58800-93J40-000
Watergrip Sport	Stainless	3	15	(381)	19	(482.6)	RR	58700-96L00-000
Watergrip Sport	Stainless	3	14 7/8	(377.8)	21	(533.4)	RR	58700-96L10-000
Watergrip Sport	Stainless	3	14 1/2	(368.3)	23	(584.2)	RR	58700-96L20-000
Watergrip Sport	Stainless	3	14 1/4	(362)	25	(635)	RR	58700-96L30-000
Watergrip Sport	Stainless	3	14	(355.6)	27	(685.8)	RR	58700-96L40-000

Applicable Model : DF300B, DF325A, DF350A

Type	Material	Blade	Diameter		Pitch		Part number
			in	(mm)	in	(mm)	
Watergrip Dual	Stainless	3	15 1/2	(393.7)	12	(304.8)	58500-98LA0-000 (Front) 58600-98LA1-000 (Rear)
Watergrip Dual	Stainless	3	15 1/2	(393.7)	15	(381)	58500-98LB0-000 (Front) 58600-98LB1-000 (Rear)
Watergrip Dual	Stainless	3	15 1/2	(393.7)	16 1/2	(419.1)	58500-98LC0-000 (Front) 58600-98LC1-000 (Rear)
Watergrip Dual	Stainless	3	15 1/2	(393.7)	18	(457.2)	58500-98L90-000 (Front) 58600-98L91-000 (Rear)
Watergrip Dual	Stainless	3	15 1/2	(393.7)	19 1/2	(495.3)	58500-98L60-000 (Front) 58600-98L61-000 (Rear)
Watergrip Dual	Stainless	3	15 1/2	(393.7)	21	(533.4)	58500-98L00-000 (Front) 58600-98L01-000 (Rear)
Watergrip Dual	Stainless	3	15 1/2	(393.7)	22 1/2	(571.5)	58500-98L10-000 (Front) 58600-98L11-000 (Rear)
Watergrip Dual	Stainless	3	15 1/2	(393.7)	24	(609.6)	58500-98L20-000 (Front) 58600-98L21-000 (Rear)
Watergrip Dual	Stainless	3	15 1/2	(393.7)	25 1/2	(647.7)	58500-98L30-000 (Front) 58600-98L31-000 (Rear)
Watergrip Dual	Stainless	3	15 1/2	(393.7)	27	(685.8)	58500-98L40-000 (Front) 58600-98L41-000 (Rear)
Watergrip Dual	Stainless	3	15 1/2	(393.7)	28 1/2	(723.9)	58500-98L50-000 (Front) 58600-98L51-000 (Rear)
Watergrip Dual	Stainless	3	15 1/2	(393.7)	30	(762)	58500-98L70-000 (Front) 58600-98L71-000 (Rear)
Watergrip Dual	Stainless	3	15 1/2	(393.7)	31 1/2	(800.1)	58500-98L80-000 (Front) 58600-98L81-000 (Rear)





# MAINTAINING YOUR SUZUKI

## OBM ENGINE OIL ECSTAR V7000 SEMI-SYNTHETIC



**99000-26310-400**  
ECSTAR V7000 4T 10W-40(4Lx4pcs)

**99000-26310-100**  
ECSTAR V7000 4T 10W-40(1Lx24pcs)

Thai Suzuki Motor Products  
Plastic bottle with a cap



**99000-21EA2-047**  
ECSTAR V7000 10W-40 4L(4Lx6pcs)

**99000-21EA2-017**  
ECSTAR V7000 10W-40 1L(1Lx20pcs)

Suzuki Motor Corporation (Japan) Products  
Metal can with a cap

### ◆ FEATURES

- Help to protect engines in severe conditions.
- Contribute to improve engine response.
- Viscosity index improvers help engine start easily.
- Advanced detergents keep engine parts clean.
- Special additives help protect engine in both salt and fresh water environments.

## OBM ENGINE OIL ECSTAR V5000 MINERAL



### ◆ FEATURES

Premium oil that has been designed especially for Suzuki marine engines does not only end with ECSTAR V7000. To meet your demand, we have set ECSTAR V5000. High quality based oil gives your four stroke outboard engine an outstanding performance for wear protection, viscosity stability, low volatility and excellent protection against rust and corrosion.

**99000-26210-400**  
ECSTAR V5000 4T 10W-40(4Lx4pcs)

**99000-26210-100**  
ECSTAR V5000 4T 10W-40(1Lx24pcs)

Thai Suzuki Motor Products  
Plastic bottle with a cap

## ECSTAR OBM GEAR OIL SAE-90



**99000-22BA2-000**  
ECSTAR OBM GEAR OIL 4L(4Lx6pcs)  
Metal can with cap

**99000-22B55-000**  
ECSTAR OBM GEAR OIL 800ML(800mlx1pcs)  
Plastic tube with a cap & an attachment nozzle

**99000-22B48-000**  
ECSTAR OBM GEAR OIL 400ML(400mlx24pcs)  
Plastic tube with a cap & an attachment nozzle

Suzuki Motor Corporation (Japan) Products

## Replacement Guideline (Engine oil & Gear oil)

Interval	1st time	20 hours or 1 month*
	From 2nd time	100 hours or 1 year*

\*Whichever comes first.

This guideline may vary by outboard model, condition of use, region, etc.

# CARE & MAINTENANCE ITEM

## SUZUKI GENUINE OIL



**99000-26120-050**  
0.5L x 24pcs  
Plastic bottle with a cap

**99000-26120-100**  
1L x 24pcs  
Plastic bottle with a cap

### 2-STROKE ENGINE OIL "PREMIUM"

1 liter  
Plastic bottle with a cap

\* Availability may differ in some regions.  
Please contact Thai Suzuki Motor Co, Ltd. for more information and making an order.



### 2-STROKE ENGINE OIL CCIS SUPER OIL

**99000-21740-007**  
1 liter  
Metal can with a cap & nozzle

## SUZUKI MARINE by MOTUL (Suzuki Approved)



**4-STROKE ENGINE OIL**  
SAE 10W-30 Semi-Synthetic  
5 liter, FC-W



**4-STROKE ENGINE OIL**  
SAE 10W-40 Semi-Synthetic  
5 liter, FC-W



**2-STROKE ENGINE OIL (TC-W3)**  
High Performance 2T Engine OIL  
1 liter, TC-W3



**MARINE GEAR OIL**  
SAE 90, GL-5  
0.35 liter

\* 4 kinds (1L, 5L, 60L, 208L) of Engine oil volume and 3 kinds (0.35L, 1L, 208L) of Gear oil are available. Please ask your local MOTUL dealer.

## GREASE



**99000-25480-000**  
SUPER GREASE-A  
450 grams (15.8 oz) for Crank oil seal



**99000-25520-000**  
WATER RESISTANT GREASE EP2  
250 grams (8.8 oz)



**99000-34001-001**  
MOLY PASTE 500  
50 grams (1.7 oz)



**99000-22B00-000**  
Metal can with a cap  
1 liter

## PTT FLUID

## LIQUID GASKET



**93691-80030-000**  
SILICONE SEAL KE45T  
100 grams



**99000-31140-000**  
1207B (BLACK)  
100 grams (3.5 oz)

## FLUSHING TOOL



**99000-81210-000**  
Applicable Model DF300B/325A/350A/  
DF300BMD/  
350AMD (Year 2023-)

**99000-81220-000**  
Applicable Model DF250S (Year 2023-)/  
DF250AUTN

## ZINC ANODE for saltwater



**55300-95500-000**  
Applicable Model DF8A/9.9A/40A-60A,  
DT9.9AK-40W



**55321-90J01-000**  
Applicable Model DF50AV/60AV/  
100C-140B

## ALUMINUM ANODE for brackish water, saltwater



**55321-87J01-000**  
Applicable Model DF2.5-350A,  
DT9.9AK-40W



**55320-94900-000**  
Applicable Model DF60A-350A

## THREAD LOCK



**99000-32020-000**  
1333B (RED)  
50 grams (1.7 oz)



**99000-32160-000**  
1342H (BLUE)  
50 grams (1.7 oz)

## FLUSH-HOSE ATTACHMENT



**55181-95200-000**  
Applicable Model DF4A-6A/40A-60A,  
DT25K-40W



**17917-87L00-000**  
Applicable Model DF8A-350A

## MAGNESIUM ANODE for freshwater



**55321-87J11-000**  
Applicable Model DF4A-350A,  
DT9.9A/15A



**55321-94910-000**  
Applicable Model DF70A-350A

## ANODE BULK PACK



**55321-95J00-000**  
Applicable Model DF2.5, DF4A-6A

**55321-93J01-000**  
Applicable Model DF70A-100C/100B/  
DF150A-350A

**55321-87810-B50**  
Applicable Model DF2.5-350A,  
DT9.9AK-40W  
55321-87J01 x 50pcs in one package

## ENGINE COVER



**99000-81700-000**  
Applicable Model DF8A-20A,  
DT9.9A-15A

**99000-81710-000**  
Applicable Model DF25-60A,  
DT25/30

**99000-81720-000**  
Applicable Model DF70A-90A/100B,  
DT40

**99000-81730-000**  
Applicable Model DF100C/115B/  
115BG,140B/  
140BG,  
DF200T/Z-250T/Z

**99000-81740-000**  
Applicable Model 150A - 200A  
150AP - 300AP

**99000-81750-000**  
Applicable Model DF300B/325A/  
350A

# MAINTENANCE KIT

SUZUKI highly recommends you to replace your outboard motor with Maintenance Kits every 100 hours or 1 year, whichever comes first.



**LINEUP For 2 STROKE OBM**

MODEL YEAR	KIT PART NUMBER	PART NUMBER	PART NAME	QTY
DT9,9/15 (A) ('13-)	17400-90831	17400-90L03-000	WATER PUMP REPAIR SET	1
		09204-02004-000	PIN	1
		09482-00533-000	PLUG, SPARK (BR7HS-10)	2
		17685-91D00-000	GASKET, THERMOSTAT COVER	1
		55321-87J01-000	ANODE, PROTECTION	1
		55321-90L00-000	ZINC, PROTECTION	2
		59178-97J00-000	GASKET, DRAIN PLUG	2
DT30 ('15-)	17400-91881	17400-94L30-000	KIT, WATER PUMP REPAIR	1
		09204-03003-000	PIN	1
		09482-00533-000	PLUG, SPARK (BR7HS-10)	2
DT40W/40WR ('13-)	17400-92811	17685-96300-000	GASKET, THERMOSTAT COVER	1
		55321-87J01-000	ANODE, PROTECTION	1
		59178-97J00-000	GASKET, DRAIN PLUG	2
		17400-94413-000	KIT, WATER PUMP REPAIR	1
		09168-10022-000	GASKET (10X17X1.5)	2

**LINEUP For 4 STROKE OBM**

MODEL YEAR	KIT PART NUMBER	PART NUMBER	PART NAME	QTY
DF2/2.5 ('12-)	17400-97810	09168-10022-000	GASKET (10X17X1.5)	1
		09202-02006-000	PIN (2.9X14)	1
		09204-03003-000	PIN	1
		09280-33005-000	O RING (D:1.9, ID:32.7)	1
		09482-00406-000	PLUG, SPARK (CR6HSA)	1
		17461-97JM0-000	IMPELLER, WATER PUMP	1
		17471-97JL0-000	PANEL, PUMP CASE UNDER	1
		17472-97JL0-000	GASKET, PUMP CASE PANEL	1
		55321-87J01-000	ANODE, PROTECTION	1
		59178-97J00-000	GASKET, DRAIN PLUG	2
DF4A/5A/6A P01 DF4A/6A P03 ('17-)	17400-91891	17400-98661-000	KIT, WATER PUMP REPAIR	1
		09168-12017-000	GASKET (12X17X1)	1
		09204-03003-000	PIN	1
		09280-39002-000	O RING (D:2, ID:38.5)	1
		09482-00L04-000	PLUG, SPARK (CPR6EA-9)	1
		16510-16H11-000	FILTER, ENGINE OIL	1
		17412-91JL0-000	PANEL, WATER PUMP CASE UPR	1
		17413-91JL0-000	SLEEVE, WATER PUMP CASE	1
		44330-13H00-000	FILTER, FUEL	1
		55321-87J01-000	ANODE, PROTECTION	1
DF8A/9.9A ('10-)	17400-99841	55321-95J00-000	ANODE, PROTECTION	1
		59178-97J00-000	GASKET, DRAIN PLUG	2
		17400-99J20-000	KIT, WATER PUMP REPAIR	1
		09168-12017-000	GASKET (12X17X1)	1
		09204-02004-000	PIN	1
		09280-13004-000	O RING (D:1.9, ID:13)	1
		09280-22019-000	O RING (D:1.9, ID:21.8)	1
		09280-54001-000	O RING (D:2.4, ID:52.6)	1
		09482-00528-000	PLUG, SPARK (CR6E)	2
		15410-98500-000	FILTER, FUEL	1

MODEL YEAR	KIT PART NUMBER	PART NUMBER	PART NAME	QTY
DF9.9B/15A/20A ('13-)	17400-89812	17400-99J20-000	KIT, WATER PUMP REPAIR	1
		09168-12017-000	GASKET (12X17X1)	1
		09204-02004-000	PIN	1
		09280-13004-000	O RING (D:1.9, ID:13)	1
		09280-22019-000	O RING (D:1.9, ID:21.8)	1
		09280-54001-000	O RING (D:2.4, ID:52.6)	1
		09482-00661-000	PLUG, SPARK (MR6K-9)	2
		15410-87L00-000	FILTER, FUEL	1
		16510-45H10-000	FILTER ASSY, ENG OIL	1
		17413-94J00-000	SLEEVE, WATER PUMP CASE	1
		55321-87J01-000	ANODE, PROTECTION	2
		59178-97J00-000	GASKET, DRAIN PLUG	2
		17400-94L21-000	KIT, WATER PUMP REPAIR	1
		09168-12017-000	GASKET (12X17X1)	1
		09204-03003-000	PIN	1
		09280-22019-000	O RING (D:1.9, ID:21.8)	1
		09482-00661-000	PLUG, SPARK (MR6K-9)	3
DF25A/30A ('15-)	17400-94824	15410-87L00-000	FILTER, FUEL	1
		16510-87J01-000	FILTER ASSY, OIL	1
		17413-94L00-000	SLEEVE, WATER PUMP CASE	1
		55321-87J01-000	ANODE, PROTECTION	5
		59178-97J00-000	GASKET, DRAIN PLUG	2
		17400-88L01-000	KIT, WATER PUMP REPAIR	1
		09168-10022-000	GASKET (10X17X1.5)	2
		09168-12012-000	GASKET (12.5X20X2.5)	1
		09204-03003-000	PIN	1
		09280-22019-000	O RING (D:1.9, ID:21.8)	2
		DF40A/50A/60A ('10-)	17400-88812	09482-00446-000
15410-88L00-000	FILTER, FUEL			1
16510-87J01-000	FILTER ASSY, OIL			1
55321-87J01-000	ANODE, PROTECTION			3
17400-99E12-000	KIT, WATER PUMP REPAIR			1
09168-10022-000	GASKET (10X17X1.5)			2
09168-12012-000	GASKET (12.5X20X2.5)			1
09204-03003-000	PIN			1
09280-22019-000	O RING (D:1.9, ID:21.8)			2
DF50AV/60AV ('14-)	17400-88822	09482-00446-000	PLUG, SPARK (NGK DCPR6E)	3
		15410-88L00-000	FILTER, FUEL	1
		16510-87J01-000	FILTER ASSY, OIL	1
		55321-87J01-000	ANODE, PROTECTION	3
		17400-87L04-000	KIT, WATER PUMP REPAIR	1
		09168-10038-000	GASKET (9.5X16.5X2)	2
		09168-12012-000	GASKET (12.5X20X2.5)	1
		09204-03003-000	PIN	1
		09280-22019-000	O RING (D:1.9, ID:21.8)	3
DF70A/80A/90A ('09-)	17400-87813	09168-10038-000	GASKET (9.5X16.5X2)	2
		09168-12012-000	GASKET (12.5X20X2.5)	1
		09204-03003-000	PIN	1
		09280-22019-000	O RING (D:1.9, ID:21.8)	3
		09482-00446-000	PLUG, SPARK (NGK DCPR6E)	4
		15410-87L00-000	FILTER, FUEL	1
		16510-61A32-000	FILTER ASSY, OIL WAKO	1
		55321-87J01-000	ANODE, PROTECTION	3
		09280-22019-000	O RING (D:1.9, ID:21.8)	3
		09482-00446-000	PLUG, SPARK (NGK DCPR6E)	4
DF100B ('18-)	17400-87833	15412-92J00-000	FILTER, FUEL	1
		16510-61A32-000	FILTER ASSY, OIL WAKO	1
		55321-87J01-000	ANODE, PROTECTION	3
		09280-22019-000	O RING (D:1.9, ID:21.8)	3
		09482-00446-000	PLUG, SPARK (NGK DCPR6E)	4
		15412-92J00-000	FILTER, FUEL	1
		16510-61A32-000	FILTER ASSY, OIL WAKO	1
		55321-87J01-000	ANODE, PROTECTION	5
DF100C-140B(G)	99100-99L00	09168-10022-000	GASKET (10X17X1.5)	2
		09168-12012-000	GASKET (12.5X20X2.5)	1
		09204-03003-000	PIN	1
		09280-22019-000	O RING (D:1.9, ID:21.8)	3
		09482-00649-000	PLUG, SPARK (LKR6E)	4
		17400-96J04-000	KIT, WATER PUMP REPAIR	1
		09168-10038-000	GASKET (9.5X16.5X2)	2
		09168-12012-000	GASKET (12.5X20X2.5)	1
		09204-03003-000	PIN	1
		09280-22019-000	O RING (D:1.9, ID:21.8)	5
DF200A/200AP/175AP/150AP ('16-)	17400-96833	09482-00649-000	PLUG, SPARK (LKR6E)	4
		15412-92J00-000	FILTER, FUEL	1
		16510-96J10-000	FILTER ASSY, OIL	1
		55321-87J01-000	ANODE, PROTECTION	6
		17400-96J04-000	KIT, WATER PUMP REPAIR	1
		09168-10038-000	GASKET (9.5X16.5X2)	2

MODEL YEAR	KIT PART NUMBER	PART NUMBER	PART NAME	QTY
DF200/225/250 ('11-)	17400-93855	17400-93J05-000	KIT, WATER PUMP REPAIR	1
		09168-10038-000	GASKET (9.5X16.5X2)	2
		09168-12012-000	GASKET (12.5X20X2.5)	1
		09204-03003-000	PIN	1
		09280-22019-000	O RING (D:1.9, ID:21.8)	7
		09482-00427-000	PLUG, SPARK (NGK, BKR6E)	6
		15412-93J10-000	FILTER ASSY, FUEL	1
		16510-96J10-000	FILTER ASSY, OIL	1
		55320-94900-000	ANODE SET, CLAMP BRACKET	1
		55321-87J01-000	ANODE, PROTECTION	7
DF250A/300(A)/250S ('11-)	17400-98865	17400-98J04-000	KIT, WATER PUMP REPAIR	1
		09168-10038-000	GASKET (9.5X16.5X2)	2
		09168-12012-000	GASKET (12.5X20X2.5)	1
		09204-03003-000	PIN	1
		09280-22019-000	O RING (D:1.9, ID:21.8)	7
		09482-00427-000	PLUG, SPARK (NGK, BKR6E)	6
		15412-93J10-000	FILTER ASSY, FUEL	1
		16510-96J10-000	FILTER ASSY, OIL	1
		55320-94900-000	ANODE SET, CLAMP BRACKET	1
		55321-87J01-000	ANODE, PROTECTION	8

The following maintenance kits are also available.

MODEL YEAR	KIT PART NUMBER
DT30 ('12)	17400-91851
DT30 ('13-14)	17400-91821
DT40W/40WR ('07LATE-'12)	17400-92831
DF2/2.5 ('06-'11)	17400-97820
DF4/5/6 ('02-'10)	17400-91860
DF4/5/6 ('11-'16)	17400-91830
DF9.9/15 ('11-'13)	17400-94810
DF20/25 V2 ('06-)	17400-95872
DF25/30 ('01-'10)	17400-89822
DF40/50 ('06LATE-'10)	17400-87822
DF60 ('09LATE-'09END)	17400-99852
DF60/70 ('07)	17400-99871
DF60/70 ('08-'09EARLY)	17400-99861
DF100/115 ('10-'12)	17400-92842
DF100A/115A/140A ('13-)	17400-92823
DF140 ('10-'12)	17400-92852
DF150/175 ('06-)	17400-96824
DF325A/350A ('18-22)	17400-98873

You can also check the components for Maintenance Kits at Suzuki Ultimate Rigging Selector (in PDF section):  
<https://www.globalsuzuki.com/marine/SuzukiUltimateRiggingSelector/>





# APPLICATION CHART

ITEM Applicable for Remote Control	PAGE	DF350AMD	DF350A	DF325A	DF300BMD	DF300B	DF300AP	DF250AP	DF200AP	DF175AP	DF150AP	DF250T	DF250Z	DF225T	DF225Z	DF200T	DF200Z	DF200AT	DF200AZ	DF175AT	DF175AZ	DF150AT	DF150AZ	DF140BTG	DF140BZG	DF140BT	DF140BZ	DF115BTG	DF115BZG	
		SUZUKI PRECISION CONTROL (S.P.C)	P.08-17	○	○	○	○	○	○	○	○	○	○	○	○	○	○	○	○	○	○	○	○	○	○	○	○	○	○	○
MECHANICAL REMOTE CONTROL (CAN CONNECTION)	P.18-29																	○	○	○	○	○	○	○	○	○	○	○	○	○
MECHANICAL REMOTE CONTROL	P.30-31																													
TROLL MODE SWITCH PANEL	P.25	○	○	○	○	○	○	○	○	○	○	○	○	○	○	○	○	○	○	○	○	○	○	○	○	○	○	○	○	○
KEYLESS START SYSTEM (CAN CONNECTION)	P.32-33	○	○	○	○	○	○	○	○	○	○	○	○	○	○	○	○	○	○	○	○	○	○	○	○	○	○	○	○	○
SUZUKI MULTI-FUNCTION GAUGE (SMG4)	P.34-41	○	○	○	○	○	○	○	○	○	○	○	○	○	○	○	○	○	○	○	○	○	○	○	○	○	○	○	○	○
ANALOGUE INSTRUMENT	P.46-47																													
STEERING	P.48-49																													
TILLER HANDLE KIT																														
DUAL-ENGINE TIE-BAR																														
STEERING EXTENSION KIT																														
STEERING-BRACKET ATTACHMENT																														
DRAG-LINK KIT																														
<b>ELECTRICAL PARTS</b>																														
COUNTER SELECT CONNECTOR	P.13																													
BATTERY CHARGING KIT (Only For MZ type)	P.50																													
RECTIFIER SET (Only For MZ type)	P.50																													
RECEPTACLE KIT (Only For MZ type)	P.50																													
BATTERY ISOLATOR LEAD SET	P.51	○	○	○	○	○	○	○	○	○	○																			
ELECTRIC STARTER KIT (Only For MZ type)	P.51																													

ITEM Applicable for Tiller Handle	PAGE	DF90A	DF70A	DF60A	DF60AV	DF50A	DF50AV	DF40A	DF30A	DF25A	DF20A	DF15A	DF9.9B	DF9.9A	DF8A	DF6A	DF5A	DF4A	DF2.5	
		MECHANICAL REMOTE CONTROL (CAN CONNECTION)	P.18-29																	
MECHANICAL REMOTE CONTROL	P.30-31																			
REMOTE-CONTROL ATTACHMENT KIT	P.23-24																			
STEERING	P.48-49																			
TILLER HANDLE KIT																				
DUAL-ENGINE TIE-BAR																				
STEERING EXTENSION KIT																				
STEERING-BRACKET ATTACHMENT																				
DRAG-LINK KIT																				
<b>ELECTRICAL PARTS</b>																				
COUNTER SELECT CONNECTOR	P.13																			
BATTERY CHARGING KIT (Only For MZ type)	P.50																			
RECTIFIER SET (Only For MZ type)	P.50																			
RECEPTACLE KIT (Only For MZ type)	P.50																			
BATTERY ISOLATOR LEAD SET	P.51																			
ELECTRIC STARTER KIT (Only For MZ type)	P.51																			



APPLICATION CHART

ITEM Applicable for Tiller Handle	PAGE	DT40W	DT40WK	DT30	DT25K	DT15A	DT15AK	DT9.9A	DT9.9AK
		MECHANICAL REMOTE CONTROL (CAN CONNECTION)	P.18-29						
MECHANICAL REMOTE CONTROL	P.30-31								
REMOTE-CONTROL ATTACHMENT KIT	P.23-24								
STEERING	P.48-49								
TILLER HANDLE KIT									
DUAL-ENGINE TIE-BAR									
STEERING EXTENSION KIT									
STEERING-BRACKET ATTACHMENT									
DRAG-LINK KIT									
<b>ELECTRICAL PARTS</b>									
COUNTER SELECT CONNECTOR	P.13								
BATTERY CHARGING KIT (Only For MZ type)	P.50								
RECTIFIER SET (Only For MZ type)	P.50								
RECEPTACLE KIT (Only For MZ type)	P.50								
BATTERY ISOLATOR LEAD SET	P.51								
ELECTRIC STARTER KIT (Only For MZ type)	P.51								

ITEM Applicable for Tiller Handle	PAGE	DF90A	DF70A	DF60A	DF60AV	DF50A	DF50AV	DF40A	DF30A	DF25A	DF20A	DF15A	DF9.9B	DF9.9A	DF8A	DF6A	DF5A	DF4A	DF2.5
		MECHANICAL REMOTE CONTROL (CAN CONNECTION)	P.18-29																
MECHANICAL REMOTE CONTROL	P.30-31																		
REMOTE-CONTROL ATTACHMENT KIT	P.23-24																		
STEERING	P.48-49																		
TILLER HANDLE KIT																			
DUAL-ENGINE TIE-BAR																			
STEERING EXTENSION KIT																			
STEERING-BRACKET ATTACHMENT																			
DRAG-LINK KIT																			
<b>ELECTRICAL PARTS</b>																			
COUNTER SELECT CONNECTOR	P.13																		
BATTERY CHARGING KIT (Only For MZ type)	P.50																		
RECTIFIER SET (Only For MZ type)	P.50																		
RECEPTACLE KIT (Only For MZ type)	P.50																		
BATTERY ISOLATOR LEAD SET	P.51																		
ELECTRIC STARTER KIT (Only For MZ type)	P.51																		

### REFERENCE

Part Number 15-digit alpha-numerical number shows Part Number to be used for ordering.  
Applicable Model Shows typical or recommended models of ENGINES that RIGGING-PARTS and ACCESSORIES can be installed to.

### MODEL NAME AND ENGINE NUMBER

NOTE: Items and their part numbers showing in this catalogue are basically applicable to models of following engine numbers. Please consult your local dealers regarding other models and their rigging-parts and accessories.

model	engine number	model	engine number	model	engine number	model	engine number
DF350AMD	35001D-440001-	DF175A	17503F-440001-	DF70A	07003F-440001-	DT40W	04005-440001-
DF350A	35001F-440001-	DF175AZ	17503Z-440001-	DF60A	06002F-440001-	DT40WK	04005K-440001-
DF325A	32501F-440001-	DF150AP	15003P-440001-	DF60AV	06003F-440001-	DT30	03005-440001-
DF300BMD	30001D-440001-	DF150A	15003F-440001-	DF50A	05003F-440001-	DT25K	02503K-440001-
DF300B	30003F-440001-	DF150AZ	15003Z-440001-	DF50AV	05004F-440001-	DT15A	01504-440001-
DF300AP	30002P-440001-	DF140B	14005F-440001-	DF40A	04003F-440001-	DT15AK	01503K-440001-
DF250AP	25003P-440001-	DF140BZ	14005Z-440001-	DF30A	03003F-440001-	DT9.9A	00996-440001-
DF250	25003F-440001-	DF140BG	14004F-440001-	DF25A	02504F-440001-	DT9.9AK	00993K-440001-
DF250Z	25003Z-440001-	DF140BZG	14004Z-440001-	DF20A	02002F-440001-		
DF225	22503F-440001-	DF115B	11505F-440001-	DF15A	01504F-440001-		
DF225Z	22503Z-440001-	DF115BZ	11506Z-440001-	DF9.9B	00995F-440001-		
DF200	20002F-440001-	DF115BG	11505F-440001-	DF9.9A	00994F-440001-		
DF200Z	20002Z-440001-	DF115BZG	11505Z-440001-	DF8A	00801F-440001-		
DF200AP	20003P-440001-	DF100C	10005F-440001-	DF6A	00603F-440001-		
DF200A	20003F-440001-	DF100B	10004F-440001-	DF5A	00503F-440001-		
DF200AZ	20003Z-440001-	DF90A	09003F-440001-	DF4A	00403F-440001-		
DF175AP	17503P-440001-	DF80A	08002F-440001-	DF2.5	00252F-440001-		